



# **CRIMSON OILFIELD SERVICES**

ISO-9001:2015 ISO-11960:2014 ISO-10427-1:2001 and OHSAS-18001 Certified Company

## **Design & Manufacturing Oilfield Downhole Drilling & Cementing Equipments**



COS is built with one goal in mind: to design, manufacture and supply the superior Down Hole Drilling Cementing Solution to the oil and gas industry on which the clients can trust.

The Perfect design, manufacture and supply of the superior Down Hole Drilling Cementing solution to the oil and gas industry with prospective buyers!! These are the basic aspects of COS.

### **Bow Spring Casing Centralizers:**

Bow Springs, welded and non-welded, are made from high quality steel which has been heat treated and hardened tempered to ensure proper and consistent spring characteristics. Sizes available from 2 7/8" to 30"



**Bow Spring Centralizers/Spoolizer and Roller centralizers**

## Semi Rigid Centralizers:

These Centralizer are designed for small clearance casing to hole size applications.

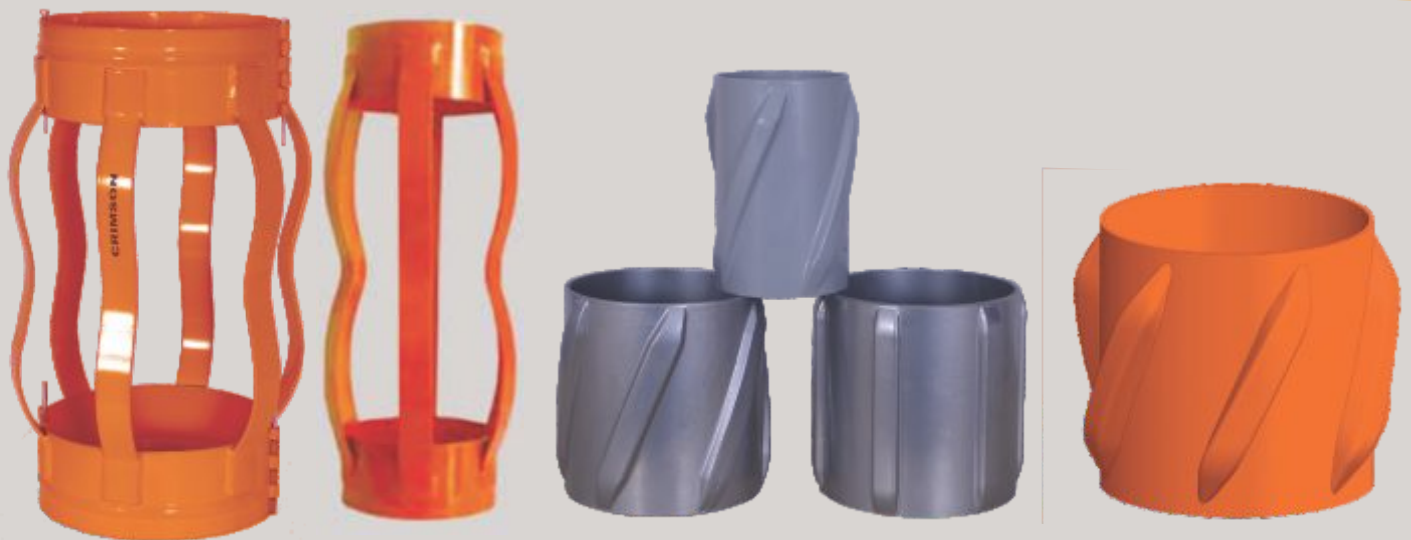
the centralizer will perform as a standard bow centralizer in holes up to 1/2" smaller then the centralizer's nominal OD. When run in hole less than 1/2" smaller than the OD, the center of the centralizer will contact the casing OD, performing as a rigid centralizer with high restoring force on less spring deflection, this centralizer is excellent for deviated and horizontal well bores.

Sizes available from 2 7/8" to 30"

## Solid Body Rigid Spiral/Straight Blades Centralizer :

This design is to provide optimum flow with blades overlap the entire 360 degree open-hole circumference. Provide reduce flow area between the spirals and create vortex motion to increase fluid velocity with direction.

Sizes available from 2 7/8" to 20"



Semi Rigid Bow Centralizer

Solid Body Rigid  
Aluminum/Steel Centralizer

Extra length of blades gives maximum centralization, high standoff and increase annular turbulence.

### Stop Collars:

Stop Collars are designed to be installed at both lead and tail of the centralizers bends to hold out its body. Sizes Available from 2 7/8" to 30"

**Wire Scratchers :** Scratchers removes excessive wall cake and improve the cement bond between the casing and porous formation while reinforcing the cement column. For running in the hole, a series of scratchers is mounted on the casing. Sizes available from 2 7/8" to 30"

### Float Equipment:

Both Float collar and float shoe are designed to endure extreme down-hole conditions.

The products are used to guide the casing in the hole, float the drilling fluid and slurry cement into the formation hole, reduce circulation pressure, hydrostatic head and contamination effect in the cementing process, provide landing seat for plugs and to help prevent cement re-entry to the casing after displacement.

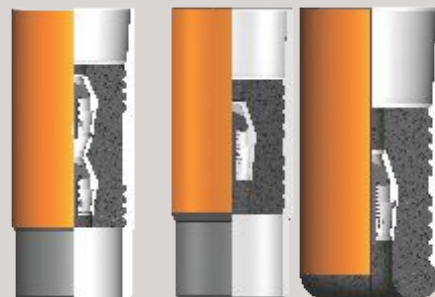
Sizes available from 2 7/8" to 30"



Stop Collars



Wire Scratcher



Float Equipment



Reamer Shoe

## Cementing plugs:

This product line includes regular top and bottom plugs and non-rotating plugs. The regular plugs are designed to land and seal on floating equipment. The non-rotating plugs are designed to minimize drilling time. Sizes available from 2 7/8" to 30"



Non Rotating Plugs



Standard Plugs



CLOSING PLUG



SHUT OFF PLUG & BAFFLE



FREE FALL OPENING CONE (FOR BACKUP ONLY)



## Stage Collars

The Hydraulic and Mechanical stage collars have been designed for stage cementing applications where the operator wants flexibility over opening the stage collar. The hydraulic stage collar is used in highly deviated and horizontal applications.

# Certifications





# ***CRIMSON OILFIELD SERVICES***

Plot No. : 1, Shiv Colony, Sec-22, Faridabad. 121004 Haryana INDIA.

M : +91 9560997848, 7838087024

E-Mail : [sales@crimsonoilfieldservices.com](mailto:sales@crimsonoilfieldservices.com)

[www.crimsonoilfieldservices.com](http://www.crimsonoilfieldservices.com)