



Digant Energy

Engineering & Energy Services



Energy Series pumps by DigantEnergy

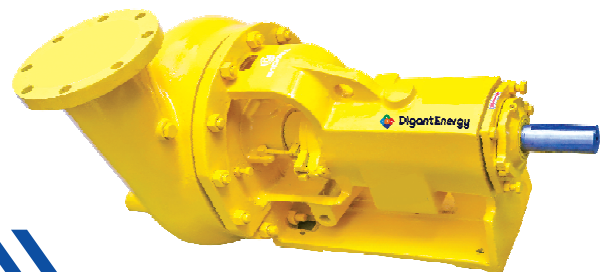


- We have a wide range of centrifugal pumps for oil & gas industries. These pumps are designed for a wide range of flow rates from few gallons to hundred of gallon per minute. Our centrifugal pumps are used in various industrial application.
- Our energy series pumps are designed for drilling, production, well servicing and industrial application. These pumps are designed for all types of fluid pumping application.
- We offers you economical and compatible centrifugal pumps for industrial application.

These are some unique features and benefits of energy series pumps.

Energy 250 Features

- ✓ Casing of Energy 250 pumps are made up of WCB which makes casing stronger and thicker. (it can perform better with corrosion & wear) pumps are designed of concentric casing so it can reduce abrasive wear and improve life of pump.
- ✓ Wide open impeller are used in this pump which minimize axial thrust load and extend bearing life.
- ✓ Stuffing box of centrifugal pump is replaceable.
- ✓ Mechanical seal is used to reduce leakage of pump. Different types of mechanical seal can be used for suitable application.
- ✓ Energy Series pumps are designed with better life of bearing and seal.
- ✓ The entrance shape of impeller vanes is more tangential to the circumferences of the suction creating a smoother flow pattern. Smooth flow is important for handling abrasive fluid.
- ✓ Casing can be easily removed by casing bolts.
- ✓ Base of energy 250 pumps are made up of strong material which makes rigid base.
- ✓ Our pumps are highly efficient and suitable for every industrial application.
- ✓ Full pipe diameter is used to minimize turbulence and maximize efficiency.
- ✓ We offers you pumps that provide great capacity as well as high heads.
- ✓ All the parts of centrifugal pump are interchangeable.
- ✓ Our pump will provide smooth flow for various fluid.



Technical support and parts availability :

- ✓ We ensure our customer can easily obtain technical support.
- ✓ We have a highly qualified technical team to give complete technical solution for our pumps.
- ✓ Our spare parts of pumps are interchangeable with most of the international brand pump. Which helps customer to source spare parts easily.

Energy 250 Pump Size Specification :

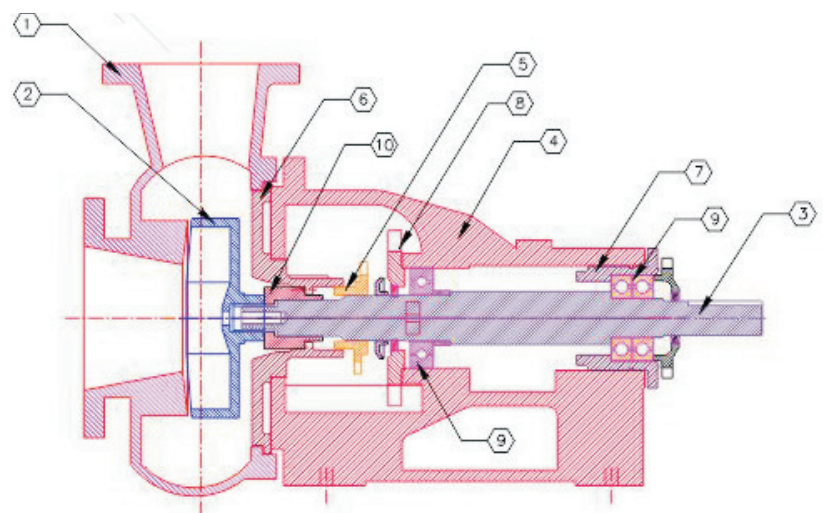
Size : suction x discharge	8" x 6" x 14"
Speed :	Upto 1750 RPM
Impeller	Open Impeller
Mechanical Seal	TugstonCarbide (Tc)
Motor HP	100 HP
Material of Construction	Cast iron / WCB / SS 410

Size Available :
3" x 2" x 13"
4" x 3" x 13"
6" x 5" x 11"
6" x 5" x 14"
8" x 6" x 14"
8" x 6" x 11"

Size	Power :	Motor Speed (RPM):	Impeller Size (Inch)	Application :
3" x 2" x 13"	25 HP	1450 RPM (50Hz) 1750 RPM (60Hz)	22" 13"	<ul style="list-style-type: none"> ◆ All types of fluid pumping application. ◆ Drilling, production, well servicing and industrial application. ◆ Water / Mud application.
4" x 3" x 13"	50 HP	1450 RPM (50Hz) 1750 RPM (60Hz)	11" 13"	
6" x 5" x 11"	75 HP	1450 RPM (50Hz) 1750 RPM (60Hz)	9" 11"	
6" x 5" x 14"	75 HP	1450 RPM (50Hz) 1750 RPM (60Hz)	11" 14"	
8" x 6" x 11"	100 HP	1450 RPM (50Hz) 1750 RPM (60Hz)	9" 11"	
8" x 6" x 14"	100 HP	1450 RPM (50Hz) 1750 RPM (60Hz)	11" 14"	

DESCRIPTION

01 BODY CASING	ENG-001
02 IMPELLER	ENG-I01
03 SHAFT	ENG-S01
04 BEARING HOUSING	ENG-B02
05 GLAND RING	ENG-B04
06 STUFFING PLATE	ENG-B05
07 BEARING COVER BACK	ENG-B06
08 BEARING COVER FRONT	ENG-B07
09 BEARING	ENG-B03
10 SLEEVE	ENG-B02

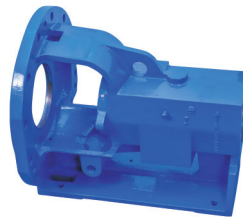


Parts Name & Code :

Sr No.	SPARE NAME	SPARE CODE	Qty (NOS)
1	BODY CASING	ENG-001	1
2	BEARING HOUSING	ENG-B02	1
3	SHAFT	ENG-S01	1
4	SLEEVE	ENG-S02	1
5	MECHANICAL SEAL	ENG-M01	1
6	BEARING	ENG-B03	3
7	GLAND RING	ENG-B04	1
8	STUFFING PLATE	ENG-B05	1
9	BEARING COVER BACK	ENG-B05	1
10	BEARING COVER FRONT	ENG-B07	1
11	IMPELLER	ENG-I01	1
12	GLAND RING	ENG-B08	2



BODY CASING



BEARING HOUSING



SHAFT



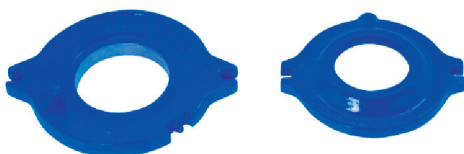
SLEEVE



MECHANICAL SEAL



STUFFING PLATE



BEARING COVER FRONT



IMPELLER



BEARING COVER BACK



Ball Valve

SIZES : 1/4" to 24"
 TYPE : Two Way, Three Way, Four Way Ball Valves
 MOC : Ball Valves: Cast Iron / Cast Steel / Forged Steel / SS 304 / 316, SS 304L / 316 L, PTFE / POLYPROPYLENE Lined.
 PRESSURE RATING ASA : 150#, 300#, 600#, 800#
 DESIGN : Single Pc, Two Pc & Three Pc Design Ball Valves
 END CONNECTION : Screwed End / Socket Weld / Flanged End Ball Valves
Application : Process Chemicals, Air, Gas, Water and Many More.
 OPERATION AVAILABLE : Manual, Gear Operated, Electro Pneumatic, Electric Actuated, Cylinder, etc.
 PORT : Full Port & Regular Port

SIZE : 40MM TO 1200MM
 TYPE : Wafer Type, Slim - Seal Butterfly Valves
 MOC : Cast Iron / Cast Steel / SS 304 / 316, SS 304L / 316L.
 PRESSURE RATING ASA : 150#, 300#
 DESIGN : Slim - Seal, Offset Disc. Butterfly Valves
 END CONNECTION : Wafer Type, Lugs Type, Flanged End Butterfly Valves
Application : Chemicals, Pharmaceuticals, Refineries and Petrochemicals Plants, Paper and Sugar Plants, Drilling Rig and Many More.
 OPERATION AVAILABLE : Manual, Gear Operated, Electro Pneumatic, Electric Actuated, Cylinder, Spring and Diaphragm Actuator, etc.
 SEAT : Neoprene / Nitrile / Viton / Silicon / PTFE Butterfly Valves



Butterfly Valve



Check Valve

Pressure-Temperature Rating : ASME B 16.34
 Manufacturing Standard : BS 1868
 Inspection And Testing Standard : API 598
 Face to Face : ASME B 16.34
 Butt Weld Standard : ASME B 16.25
 Flanged End Dimension : ASME B 16.5 / ASME B16.47 / API 605

SIZES : 1/2" to 12"
 TYPE : "A" Weir Pattern, Straight Type (KB)
 MOC : C.I. / C.S. / SS 304 / 304L / 316 / 316 L / Polypropylene
 PRESSURE RATING ASA : 150#
 END CONNECTION : Screwed End / Flanged End Diaphragm Valves
Application : Diaphragm Valves for Pharmaceutical Industry, Food, Dairy, Chemical Industries and Many More.



Diaphragm Valve



Globe Valve

TYPE : O S & Y TYPE Rising Spindle, BOLTED BONNET
 MOC : Cast Iron / Cast Steel / FCS / SS 304 / 316, 304L / 316L.
 PRESSURE RATING ASA : 150#, 300#, 600#, 800#
 END CONNECTION : Screwed End / Socket Weld End / Flanged End / Butt Weld end Globe Valves
Application : Chemicals, Pharmaceuticals, Refineries and Petrochemicals Plants, Paper and Sugar Plants, Drilling ring and Many More.
 OPERATION : Manual, Gear Operated, Electrically Operated Globe Valves



Needle Valve

Size : 1/8 to 1"

End connection : NPT, BSPT, Socket weld, Butt weld, Tube fitting

Working Pressure : 3000 PSIG, 6000PSIG, 10000 PSIG

Temperature Rating : PTFE 450F,(232C)/Grafoil 700 F(371C)

Material : Cast Steel, SS 202, SS 304, SS 304L, SS 316, SS 316L, steel in accordance with NACE MR0175 is available on request Monel, Inconel, Hastelloy, Duplex steel are also available on request.

Gland packing : PTFE / Graphite

Panel mounting on request.



Plug Valve

SIZES : ½" TO 8"

TYPE : Plug Valves - Two way, Three Way

MOC : Cast Iron, Carbon Steel, SS 304 / 316 / 304L / 316L, PTFE Sleeved / PTFE lined

PRESSURE RATING : ASA 150#

DRILLING : ANSI B 16.5 BS 10 TABLE "D", "E" & "F"

END CONNECTION : Flanged End, Screwed End

OPERATION AVAILABLE : Manual, Wrenched Operated, Gear Operated, Pneumatic Actuator, Electric Actuator

Application : Plug valves for Oil Refineries, Oil Plants, Cement Plants, Pharmaceutical Industries, Chemical Industries, Petrochemical Plants and many more.

