



ProHawk

See what you're missing...



What is ProHawk®?

ProHawk is a real-time, video enhancement and analysis technology that provides clarity for enhanced decision making. ProHawk utilizes powerful processors and sophisticated software algorithms to enhance video images captured under challenging conditions - in real-time.



What can ProHawk enhance?

ProHawk can minimize the effects of severe climatic conditions, unfavorable lighting and other environmental difficulties. ProHawk is effective for enhancing images impaired by:



Light



Weather



Environment

Where can ProHawk be used?

ProHawk is versatile, plug & play and easy to control. ProHawk is able to offer real-time video image enhancement to a host of different applications including:



Security & Surveillance



Industrial



Government



Transportation



Military



Maritime-Subsea

Six reasons to choose ProHawk:

1. Flexible

We support standard and high definition video including HD, HD-SDI & 3G-SDI

2. Sophisticated

Our DEF algorithms have widespread applications supporting all types of environmental conditions

3. Powerful

ProHawk utilises Field Programmable Gate Arrays that are 50 - 100 times more powerful than the CPU typically used by our competitors

4. Versatile

ProHawk enhances many types of imagery including conventional video, infrared, thermal and even medical images.

5. Easy

Prohawk is simple to operate with automatic calibration and operation. Minimal training is required.

6. Plug & Play

ProHawk solutions can be quickly and simply integrated into existing camera and imaging systems without need for calibration

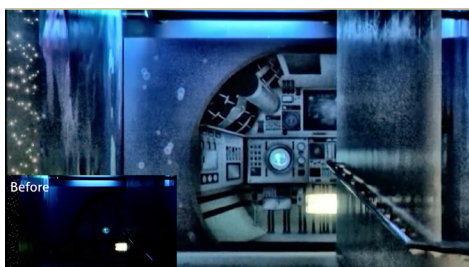
ProHawk See what you're missing...



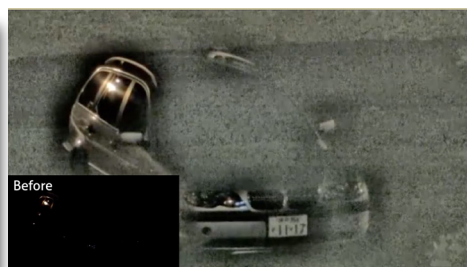
ProHawk HD-SDI



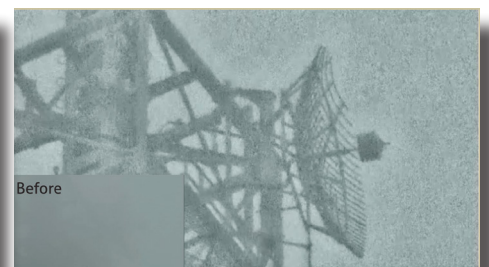
ProHawk SD-4CH



Environment



Light



Weather

ProHawk HD-SDI

Input / Output	Video Signal	HD-SDI/3G-SDI	HDMI
	Input / Output	1 input 2 outputs 1 through	1 input via HDMI to HD-SDI adaptor 1 output
	Signal format	SMPTE259M/292M/424M	
	Connector	BNC	HDMI
	Resolution	1920 x 1080 – 60p/59.94p/50p/30p/25p 1920 x 1080 – 60i/59.94i/50i 1280 x 720 – 60p/50p 720 x 480 – 60i/59.94i 720 x 576 – 50i	
Control	External control	RS232C RS422 Ethernet	
	Connector Type	Dsub9p(F) Dsub9p(M) RJ-45	
Panel	Push Button	DEF ON/OFF Color ON/OFF NR ON/OFF Image Capture Motion Capture ON/OFF	
Video Processing	Throughput	1/60sec for 1 frame on real-time	
	Delay time	20µ sec	
Capture	Media	SD Card SDHC (Max 32GB)	
	Record	Simultaneous frame capture of original and processed image, JPEG format	
Environment	Operating / Storage Temperature	Operating: 0°C to 55°C Storage: -20°C to 65°C	
	Operating / Storage Humidity	Operating: 10% to 80%RH, non condensing Storage: 5% to 95%RH, non condensing	
Power	Voltage / Current	DC12V ±10% 2A (24W)	
	AC adapter	100 to 240VAC 50/60Hz DC12V 40W	
Specifications	Dimensions and Weight	W: 350mm x D: 175mm x H: 43.7mm, 1 U Rack Mountable, 2.2 kg	

ProHawk SD-4CH

Input	Input Image	4 Channels (Concurrent Input)	
	Format	NTSC-N/NTSC-M/PAL	
	Type	Analog Composite	
	Connector	BNC	
Output	Output Image	4 Channels (Concurrent Output)	
	Format	NTSC-N/NTSC-M	
	Type	Analog Composite	
	Connector	BNC	
Video Processing	Throughput	Variable dependent on channel synch delay and processing options, typical 2-3 frames	
Control	External Control	RS232C RS422 RS485 Ethernet	
	Connector	D-SUB9p(F) Terminal RJ-45	
Environment	Operating / Storage Temperature	Operating: 0°C to 40°C Storage: -20°C to 65°C	
	Operating / Storage Humidity	Operating: 10% to 80%RH, non condensing Storage: 5% to 95%RH, non condensing	
Power	Voltage / Current	DC12V 3.34A (40W Max)	
	AC adapter	100 to 240VAC Full Range 47 to 63 Hz 40W - 45W	
Specifications	Dimensions and Weight	W: 305mm x D: 191mm x H: 44mm, 1U Rackmountable, 1.8 kg	

Want to find out more?



To find out more about what ProHawk could do for you, please visit our website:

BarnettAndAssoc.com/ProHawk

+1.224.325.5060 prohawk@barnettandassoc.com

Barnett and Associates, LLC
323 Robin Glen Lane
South Elgin, IL 60177
USA

