

2015 Catalogue

Dropsafe®
Drops Prevention Devices

Dropsafe® Patented Technology

The Oil and Gas Industry's most widely adopted solution for securing and tethering overhead fixtures

**Professional.
Reliable.
Secure.**

www.dropsafe.com





About us

For over 20 years we have been delivering innovative and patented mesh-security and mesh-safety solutions. At Dropsafe we improve workplace safety by collaborating with industry professionals in the Oil and Gas, Mining and Industrial sectors to develop effective application-specific dropped and falling objects prevention solutions.

The Oil and Gas Industry is recognised as the global leader in dropped and falling objects prevention. Through our innovation and outstanding quality record, our patented technology has become the standard in the onshore and offshore Oil and Gas Sectors for securing and tethering overhead fixtures. Our leadership position is confirmed by global and exclusive fleet-wide agreements with the largest Oil and Gas drilling contractors and by supplying over 300 customers industry-wide.

At Dropsafe we enable organisations to protect their people by enhancing work place safety.



Contents

Dropsafe Net	6
Dropsafe Pouch	12

Dropped object hazards


A dropped object is any item or object that falls or has the potential to fall from height.

Fixtures (lights, CCTV cameras, speakers etc.), handheld devices, unsecured tools, loose items and structural components are all recognised hazards.

For these items, a wide range of factors can contribute to dropped objects:

- Vibration from drilling activities and operating equipment
- Oxidization and galvanic action (internal and external corrosion)
- Dynamic movement of operating equipment
- Environmental factors such as wind and gravity
- Inadequate installation and maintenance
- Wear and fatigue
- Unsecured tools and equipment used at height
- Poor housekeeping and human error

Dropped objects can result in the serious injury or death of personnel in or near the impact zone, as well as damage to critical equipment with negative consequences.



In the offshore Oil & Gas Industry:

72%

of dropped objects
are equipment parts
or unsecured objects*

52%

of dropped objects fall
from more than 5 meters*

* Dropped objects register of incidents and statistics (DORIS) May 2013-period analysed April 2012-2013.
www.dropsonline.com

Our products

Dropsafe's patented products have become the standard for securing and tethering overhead fixtures in the Oil and Gas Industry, one of the world's most hostile working environments.

Our focus on innovation, quality, industry collaboration and 3rd party validation and testing enables us to deliver industry-leading, high-performing products.



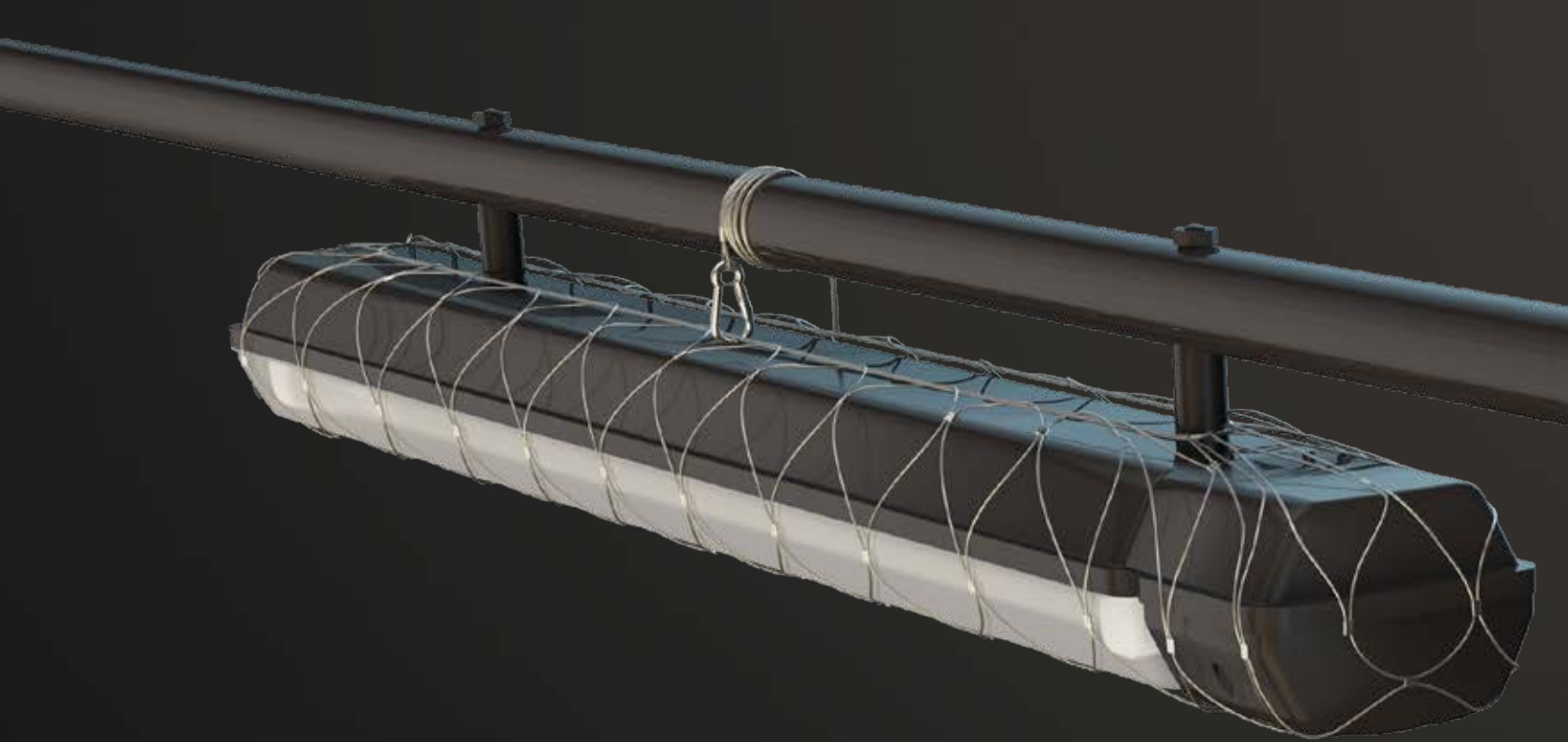
Dropsafe Nets

Safety nets that enclose and tether overhead fixtures to prevent dropped and falling objects.



Dropsafe Pouches

Safety devices that are attached to the user, which securely enclose and tether handheld items used at height.

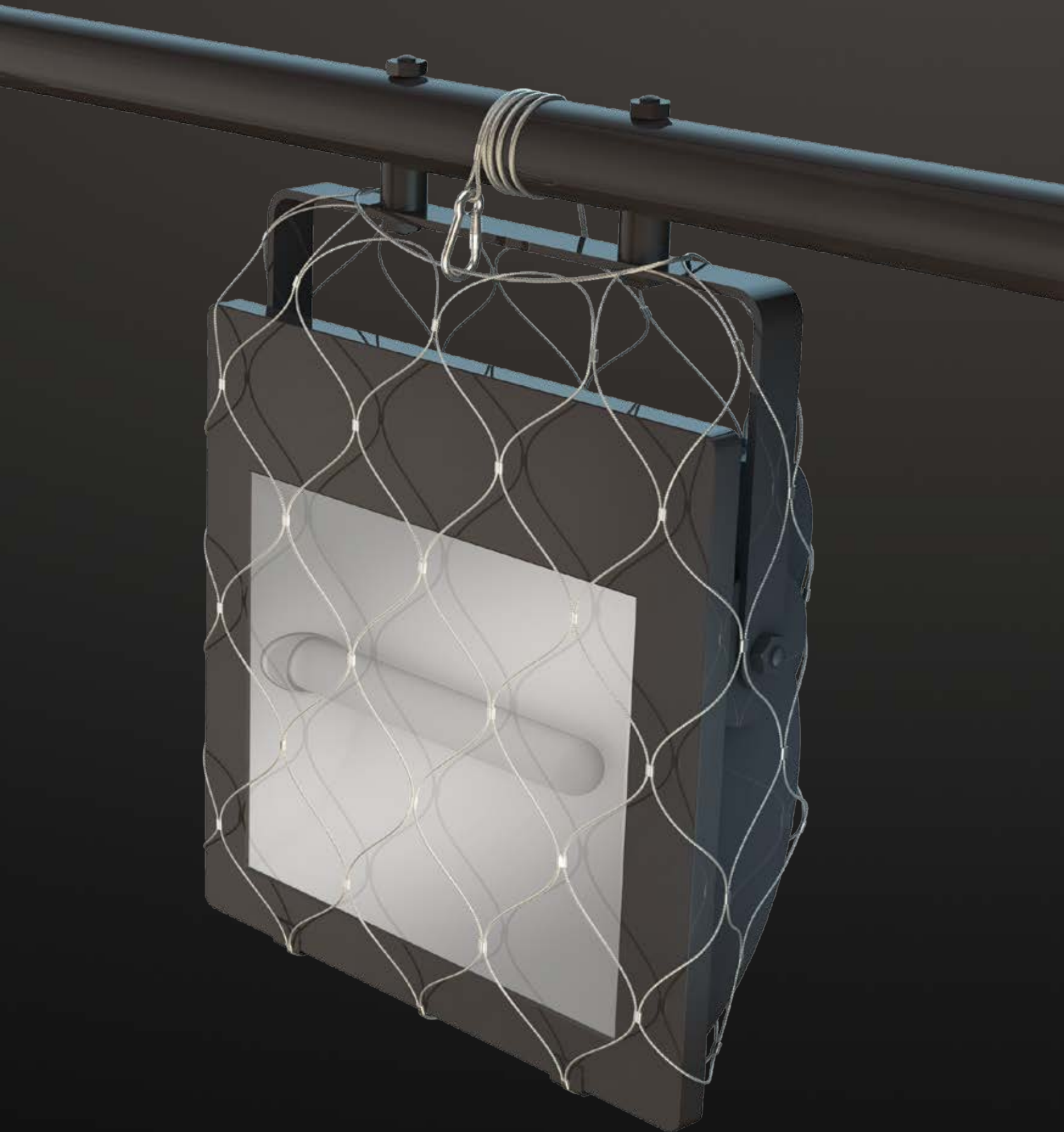


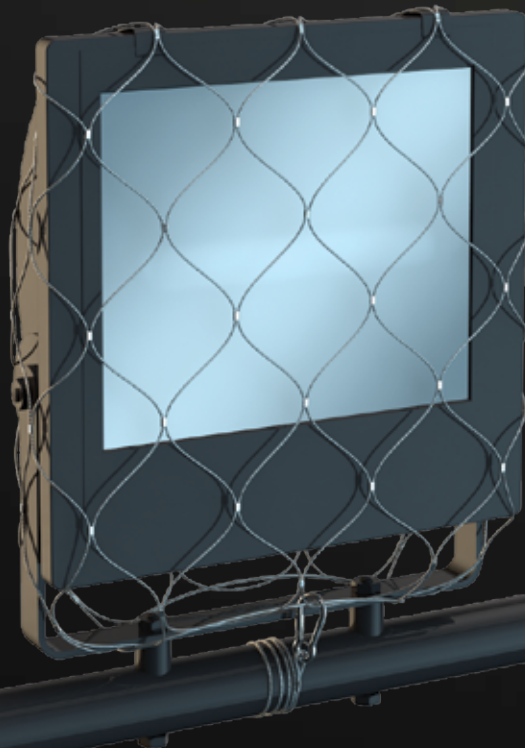
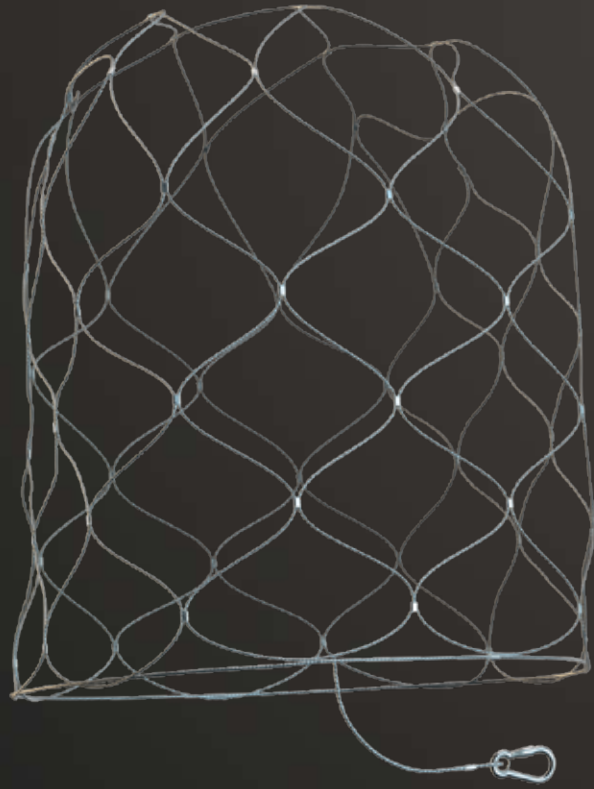
DropSAFE Nets

The patented DropSAFE Nets are secondary securing devices, used to enclose and tether overhead fixtures (eg. lights, beacons, speakers, self-retracting lifelines, CCTV cameras, anodes, pipe clamps) located above personnel or important equipment.

Benefits

- Provides an instant safety solution for your personnel
- Easy to install, no tools required
- Fully encloses and tethers fixture being secured
- Retains loose or dislodged items
- Available for wide range of fixture types





How the Net works

The net fully encloses the item being secured, while the integrated securing cable attaches around a structural attachment point, preventing both the item and fixture components from dropping or falling.

Where to use

- Fixtures located above personnel
- Fixtures on mobile equipment (e.g. crane booms, derricks, drill rigs)
- Fixtures in potential impact zones of mobile equipment
- Fixtures and mountings exposed to vibration wear and fatigue
- Fixtures prone to oxidization and galvanic action (internal and external corrosion)
- Fixtures located above operations' critical equipment
- Fixtures located in areas difficult to access for maintenance or inspection
- Securing items being replaced, maintained or repaired in situ

Features



Designed and tested to over five times (5X) the product Safe Working Load (SWL)



Able to retain most fixture mounting brackets (if SWL not exceeded)



Withstands extreme high temperatures of up to 500°C (932°F)



SUS/AISI 316 stainless steel wire and components



Withstands extreme low temperatures down to -40°C (-40°F)



Available for a wide range of fixtures (custom designs also available)

Fixture types

Dropsafe Nets are designed and tested to fit a variety of fixture types.



Floodlights



Fluorescent / LED Strip Lights



Nav / Strobe Lights



Speakers / Horns



CCTV Cameras



Self-Retracting Lifelines



Pipe Clamps



Anodes



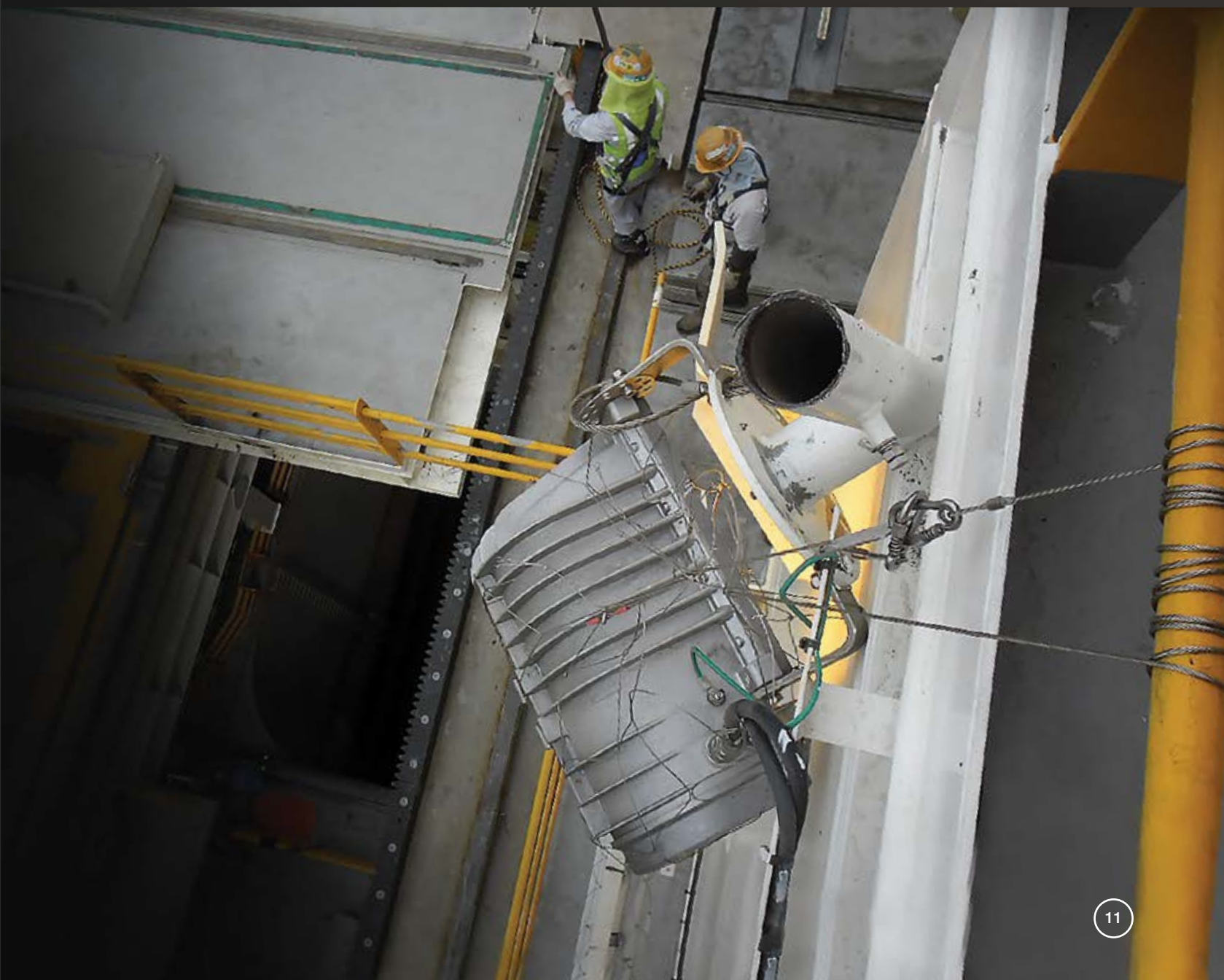
Junction Boxes, Heat, Smoke and CO2 Detectors

Case Study : Dropsafe at work

Dropsafe prevents potentially serious incident during crane operations.

During lifting operations on a jack-up rig the load unexpectedly swung hitting a floodlight above the drill floor, breaking the light support.

A previously installed Dropsafe Net securely retained the light – preventing a potentially serious incident.



Dropsafe Pouches

Dropsafe Pouches are safety devices designed to secure two-way radios, portable gas detectors, aerosol spray cans, multimeters and other items used while working at height. The Pouch fully encloses and tethers the item to the user preventing it from becoming a dropped or falling objects hazard.

Where to use

All areas where work or access is required at height, where single handed use of an item is required and there is risk of dropping, damaging or losing an item.

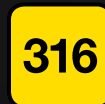
Benefits

- Instant safety solution
- Fully encloses and tethers item being secured
- Heavy duty belt clip allows versatile use of item
- Plastic coated components to prevent item being scratched
- SUS/AISI 316 stainless steel wire and components
- Products available to fit a variety of hand held items

Features



Designed and tested to over five times (5X) the product Safe Working Load (SWL)



SUS/AISI 316 stainless steel wire and components



TPU coated wires and POM mesh clips to protect your gear



Products available to fit a variety of handheld devices



Heavy duty belt clip allows versatile use of item being secured



Notes

A series of horizontal dotted lines for writing notes.



Asia Pacific

T + 852 3664 8350 Head Office
T + 65 6372 8689 Singapore Office
info@dropsafe.com

Australia

T + 1 800 768 182
australia@dropsafe.com

USA & Canada

T + 1 888 211 1406
usa@dropsafe.com
canada@dropsafe.com

Europe

T + 44 20 3318 2003
europe@dropsafe.com

Middle East & Africa

T + 971 4 328 4855
middleeast@dropsafe.com

Brazil

brazil@dropsafe.com

Dropsafe is a proud member of:



DROPS



IADC



CAODC

Dropsafe®



Drops Prevention Devices

www.dropsafe.com