

The logo for SIVAM features the word "SIVAM" in a bold, green, 3D-style font with a white highlight. The letter 'I' is replaced by a white silhouette of an oil derrick. The background of the entire page is a photograph of an offshore oil platform at sunset, with the sky transitioning from orange to dark blue and the platform's lights reflecting on the water.

**SIVAM**

**Products & Services  
for the Oil & Gas Industry**

[www.sivam.com](http://www.sivam.com)

# History

Sivam was founded in 1995 and since then has grown thanks to the profound devotion to Quality, to the Health and Safety of it's Personnel and to the Environment. Needless to say Sivam is HSEQ Certified ISO 9001, ISO 14001 and OHSAS 18001 and has received awards as a recognition of this devotion.

All key Sivam personnel has accumulated an average of 25 years experience in various sectors of the oilfield.

The capacity to adapt to new market situations and the availability to offer niche products and services has made Sivam successful while working with other contractors as part of an integrated service group or by itself as a solution provider for our client's specific problems.

Sivam has its principle office in Spoltore Italy from which the Sivam Management Team directs all its operations worldwide.



# Policy

SIVAM is a private company that has Customer Satisfaction as a strategic target which can be achieved by a continuous improvement of all company processes, developing and applying an Integrated Quality Environment & Safety System.

Our Company was born in Italy but the world is our home and it's there that we want to continue to grow, developing the foreign market and ensuring a fair return for our shareholders, in full compliance with ethics and applicable laws, both mandatory and voluntary.

Our growth is founded on the continuous development of our technologies, with the introduction of innovative products in the market and with professional growth, through the continuous training of our personnel, for a safe and quality approach on our products, services and processes.

Our personnel is our most important investment, therefore its safety, that of our Customers, of third-parties and of all the equipment will always be at the top of our agenda. For this reason we are continuously committed in preventing accidents and professional illnesses, continuously monitoring the number and types of near-misses. We believe that giving continuous information to our workers about safety is a goal which allows our personnel to know all the risks to which it's exposed, and to know our commitment in reducing them.

The environment in which we live is ours only for a short time, our commitment is to protect it and preserve it even for the future generations, so that the SIVAM that will operate in 2100 can do so at full throttle.



# Divisions

The company is organized in different divisions:

## **Manufactured Products**

- Kwik Protectors
- XL & Powerlift hydraulic pumping units
- Spooling units and half moon sheaves
- Heaters
- Chemical injection system skids
- Custom designed solutions
- Equipped special containers

## **Drilling and Completion Solutions**

### **Products and Services**

- Well design and calculations
- Product sales and installations
- Equipment testing and maintenance
- High pressure testing with certification

## **Secondary Recovery Division**

### **Products and Services**

- Secondary Recovery Equipment
- Design of completion and workover systems for secondary recovery wells
- Product sales
- Equipment installation and maintenance

## **Rental Equipment**

- XL and Powerlift hydraulic pumps for sucker rod completions
- Spooling units and half moon sheaves
- Acoustic well sounder & dynamometer
- Heaters
- Waste Gas Incinerators
- Fluid handling equipment and compactors
- Generators, field cabins and accessories
- Coiled tubing equipment
- Setting tools
- Retrievable bridge plugs
- Stimulation packers
- Pumps for fluid transfer or displacement
- Off-Shore baskets

## **Industrial Division**

- Air monitoring equipment
- Toxic gas monitors and control systems
- Oil absorbent equipment and antipollution kits
- Hydraulic and Pneumatic equipment and systems
- Industrial cleaning
- Valve and wellhead greasing systems
- Maintenance of well sites
- Sivam's sister company S.I.S. - Sistemi Integrati di Sicurezza



# Control line and cable protectors

SIVAM's CONTROL LINE AND CABLE PROTECTORS are designed to provide excellent protection of control lines and/or cables during running in hole. The protectors prevent the cables/control lines from twisting, crushing and also from erosion against the tubing coupling and the casing.

SIVAM uses the following guide lines when designing CONTROL LINE PROTECTORS:

- Streamlined design
- Rapid installation
- Excellent resistance against slippage of the protector on the tubing

- Excellent prevention from twisting of control line, crushing and also from erosion against the tubing coupling and the casing
- Minimum risk of getting stuck while running the tubing in the well.

SIVAM designs CONTROL LINE PROTECTORS to meet each customer's specific requirements. The size and shape of the protectors are designed according to:

- Dimensions and type of tubing
- Number and type of control lines and/or cables
- Casing Drift

SIVAM's PROTECTOR models can be grouped in four main categories:

## 1 - KWIK

*Single Completion Cross Coupling  
"ALL CAST" Model*



## 3 - B-KWIK

*Dual Completion Cross Coupling  
"ALL CAST" Model*



## 4 - M-KWIK

*Single Completion Middle Joint  
"ALL CAST" Model*



## 2 - S-KWIK

*Single Completion Cross Coupling  
"STRAP TYPE" Model*



## ALSO AVAILABLE

*Single Completion "UPSET" Model*



# Characteristics of our control line and cable protectors

CONTROL LINE AND CABLE PROTECTORS designed by SIVAM are:

Studied to have minimum overall dimensions, we designed the strap type protector which can satisfy even the smallest drift size;

The ends of the protectors, are linked using a WIDE RANGE CURVATURE and SMOOTH ANGLE to allow for an easier running in the well;

Sivam's protectors meet the NACE MR-01-75 standards;

Studied to offer the MAXIMUM RESISTANCE against sliding of the protector-tubing and slippage of the control line from the slots of the protector;

Designed to AVOID the control line and cable from twisting, crushing and also from erosion against the tubing coupling and the casing;

Built in SOFTER METAL than the casing, in order to avoid damage to the casing while running in hole. Can also be made in a range of other materials including stainless steel;

Installation of the CONTROL LINE AND CABLE PROTECTORS is made SAFE AND EASY thanks to the hook-up of the clamp-protector;

Equipped with a "CIRCLIP" to avoid that the locking screws unscrew and fall into the well;

Every component can be SUBSTITUTED or REPAIRED.

## Design

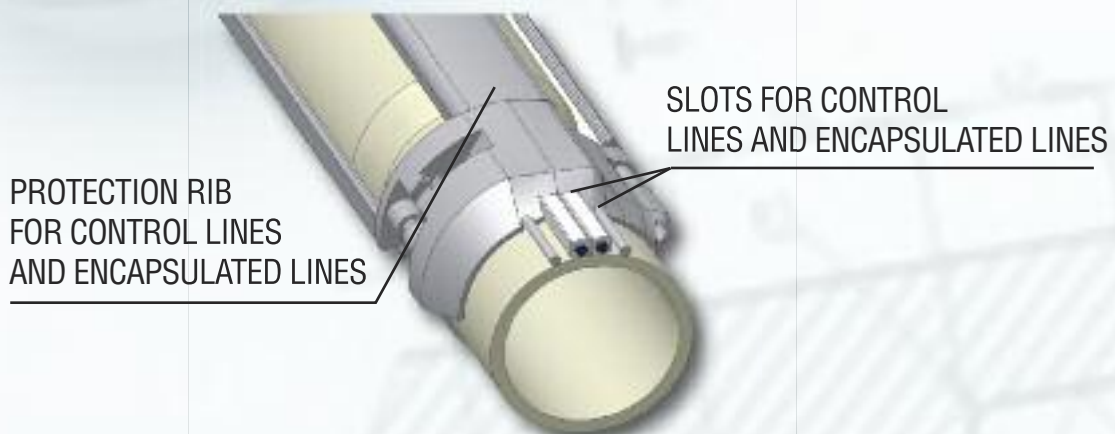
If the client's "drift needs" are not limited than SIVAM can offer ALL CAST CONTROL LINE AND CABLE PROTECTORS, with protector body and clamps, both manufactured using "LOST WAX" or "SAND" casting:

If the diameter of the drift is limited than a strap type solution can be used, this type of CONTROL LINE AND CABLE PROTECTOR is made from a casted body and plate clamps which thickness ranges from 2-2.5mm:



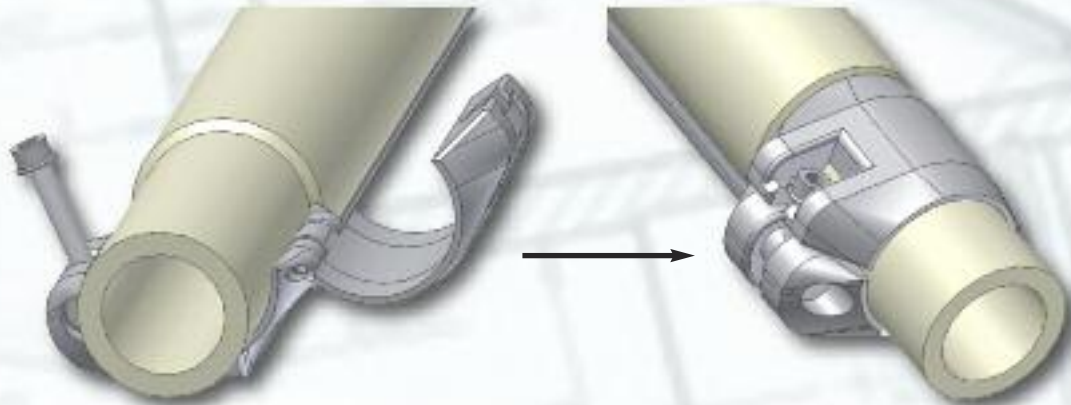
## Protection

To protect the control line and cables while running in, they are locked in the slots, as can be seen in the figure below, between the body of the protector and the tubing.



## Installation

Installation of the CONTROL LINE AND CABLE PROTECTORS is made easy thanks to the hookup of the clamp on the protector as can be seen below:



*Installation is made easier thanks to the correct sizing of the lock screws*

## Test

Visual and functional inspections are carried out on the entire production.

Load tests are performed upon request.

The dimensional test is an overall check that all components conform to the design of the protector.

The correct assembly and the overall dimensions (which must be less than the drift) are checked.

The functional and load tests verify that the protector assembly - control line - tubing can support the stress of the running in the well.

Sivam carries out sliding tests on the protectors mounted on the tubing and slippage tests on the control line and the tubing.

## Sliding test

After having assembled the protector onto the tubing, using a hydraulic press, an axial load is applied allowing the protector to slide on the tubing.

This is incremented until the protector slides. Acceptable test values can be found in attached test reports.

## Control line and cable slippage tests

After having assembled the protector onto the control line and tubing, each control line is pulled and the slippage value or strength needed in order for the control to slide against the rest of the system is measured.

**Every order is supplied with TEST REPORTS and TECH UNITS containing test results, drawings and lock screw values along with other useful information.**

## Sizes

Some of our most requested Protectors can be found in the chart below.

### KWIK TYPES

Size	Protector Code	Min Drift	Cables
2-3/8"	SA2301	5-1/2" 20# (118,2 mm)	1 x 1,23" (31,2 mm)
2-7/8"	SSU2701 SA2704	6" 26# (127,2 mm) 6-5/8" 36,7# (136,6 mm)	4 x 1/4" 1 x 1/4" + 1 x 3/8" + 1 x 1,295" (32,9mm)
3-1/2"	SA3503 SA3505 SA3506	7" 41# (144,7 mm) 6-5/8" 33# (139,7mm) 6-5/8" 35# (138,4 mm)	1 x 1/4" + 1 x 3/4" 2 x 11x11 + 2 x 1/4" 1 x 1/4" + 2 x 11x11 + 1 x 3/8"
4-1/2"	SA4501-3	7-5/8" 26,4# (173,8mm)	1 R.C. 36,5mm + 1 x 3/8" + 1 x 1/4"
5-1/2"	SA5502	8-5/8" 36# (195,6 mm)	2 x 1/4" + 1 x 3/8" + 1 R.C. 1,315"
7"	SA7002	10-3/4" 60,7# (237,6mm)	2 x 3/8" + 1 R.C. 1,50"
4-1/2" x 2-3/8"	DA452301	9-5/8" 70,3# (203,2mm)	1 x 1/4" + 2 x 11x11 + 1 R.C. 1,34"



We will design and build protectors for:  
**ANY SIZE** of tubing or coil tubing  
**ANY GEOMETRY** of casing/tubing  
**ANY COMBINATION** of power or injection or control line



# XL - Hydraulic Pumping Unit

The XL hydraulic pumping unit is SIVAM's all NEW surface mounted artificial lift system for sucker rod completions to extract crude oil and water for oil wells. The XL utilizes electronic and hydraulic equipment and computer monitoring systems for extracting fluids in an extremely efficient manner in non-eruptive wells. The XL unit consists of two main components: the XL Power Unit and the Hydraulic Cylinder.

The XL Power Unit is the control center of the system and it's responsible for driving the hydraulic cylinder and the cylinder mounted over the well head provides the lifting capacity and determines the stroke length. The available different sized XL Power Units and Cylinders are matched to meet the specifications of each oil well.

## Features and benefits

### ELECTRICAL/PROPORTIONAL CONTROL THROUGH PLC

The new XL units are electronically controlled using a PLC, this allows for a more accurate control of the operating parameters of the unit.

### REMOTE CONTROL

The electronic control of the unit allows the unit to be remotely controlled using a computer terminal, therefore making it possible to vary all parameters.

### DATA LOGGING

All operating parameters of the unit can be checked and registered in real time to be analyzed.

### MANAGEMENT OF PRESSURE PEAKS DURING INVERSION

The electronic management allows a finer control, in case of well situations characterized by pressure peaks, softer inversions can be obtained allowing the dampening of the peaks.

### SELF-CALIBRATION

The new generation pumps do not suffer from environmental temperature changes, as the system is equipped with a self-calibration system which improves performance.

### DISTANCE BETWEEN PUMP/CYLINDER

The new electrical adjustment system is not influenced by the distance between the pump skid and the cylinder. Therefore the skid can be positioned far away from the cylinder.

### REDUCED TANK VOLUME

The system operation allows for a smaller tank to be used in comparison to conventional units, this means a more compact unit and space savings for our customers.

### REDUCED CONSUMPTION

The new units introduce energy recovery systems in the small-medium sized units allowing for a significant global reduction of energy consumption.



## LESS POWER INSTALLED

The recovery system not only offers a lower consumption but also allows to significantly reduce the power installed, comparing a new unit to a traditional one, with the same performance rate, the XL needs 50% less power installed.

## TOUCH SCREEN OPERATION

To change settings and for unit check-up.

## NO NEED FOR CIVIL WORKS

The XL unit doesn't need any civil engineering for installation.

## EASY TO RIG UP

The duration of the XL unit rig-up is about 3 hours. It's not necessary to employ any great means in order to handle the equipment. The assembly can be done by a specialized technician. The well completion is the standard API sucker rod.

## REDUCED AFTER-SALE SERVICES

The new XL hydraulic pumping unit has reduced maintenance costs due to the high strength of the hydraulic system and the lack of pulsation shocks.

## GREATER OIL PRODUCTION THAN BALANCED BEAM UNITS

One of the main advantages is that our unit can produce

the same amount of fluid compared to an equivalent Balanced Beam unit, going at 1/3 of the speed (for the 9 m pump) or at 1/2 of the speed (for the 6 m pump) delivering therefore the following advantages:

- the reduced stress will cause a reduction of the system's wear and tear
- it improves the efficiency of the downhole pump because working at low speed increases the productivity
- it doubles or triples the road life span

Whit a 6 m stroke at 3 SPM, our unit can produce the same amount of fluid a 3 m stroke Balance Beam pump at 6 SPM.

## EASY TO USE FOR TESTS

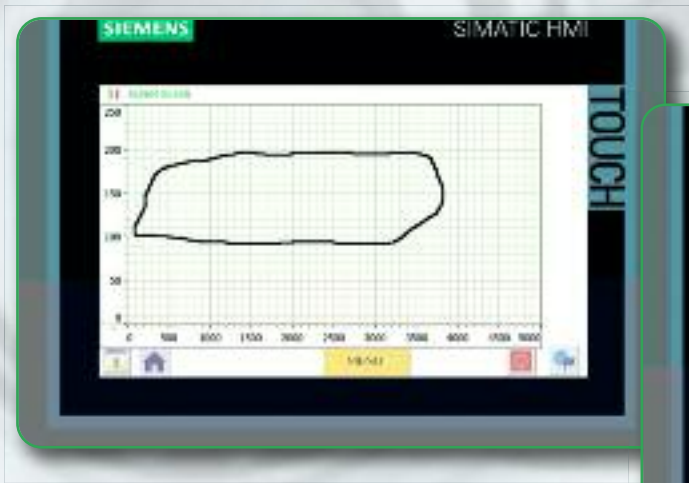
Due to reduced size and easy assembly, the unit can be used to carry out tests with the rig still standing on the location.

## NO PEAK TORQUE

Our unit isn't subject to torque forces because it does not have a gear box and therefore it has no depth limitations, in fact it can go as deep as the rod allows it to.

## ATEX AND ENVIRONMENTAL NORM FRIENDLY

This system can be engineered and constructed to comply with ATEX norm and with environmental normatives related to oil spill.



# XL hydraulic cylinders

The XL pumping units can be equipped with different types of hydraulic cylinders that are designed to meet specific requirements.

## **XC SERIES CYLINDERS ADVANTAGES:**

- no possible contamination of hydraulic oil
- continuous stroke control
- possibility to modify the stroke length without stopping production

## **C SERIES CYLINDERS ADVANTAGES:**

- reduced dimensions
- possibility of long stroke, up to 9m
- reduced costs



# Chemical injection systems & pressure test pumps

SIVAM designs, manufactures and assembles Chemical Injection Skids for various applications to fit Customer's needs.

When high viscosity of the chemical is a problem we have designed a system which automatically switch to solvents in order to re-establish the required rate and pressure.



The system requires a low investment and is offered on an All Inclusive basis. It can be powered electrically, pneumatically or even with solar power.

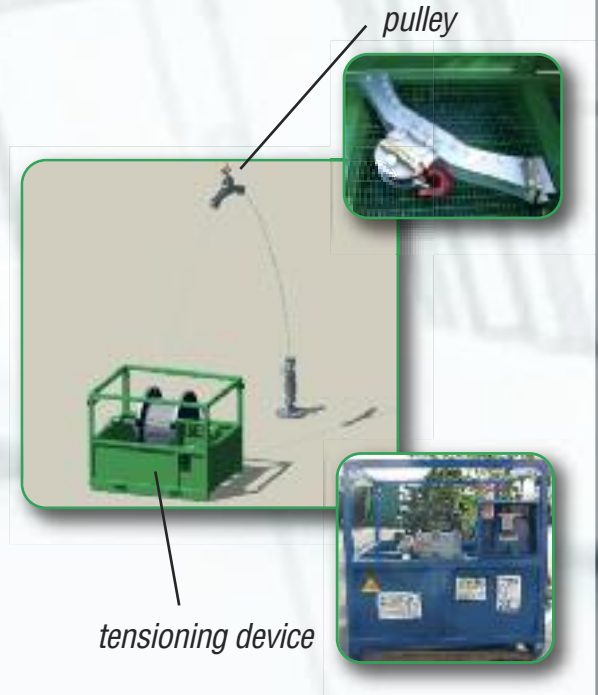
Sivam also manufactures pressure test pump skids for flushing and pressure testing control lines, injection lines and safety valves and other components.



## Spooling units

SIVAM also designs, manufactures and assembles Spooling Unit and half moon sheaves for running of control line/injection line or mono-conductor cable. This equipment is needed when cables go very deep and the purpose is to ensure that the cables or lines are kept in tension so that there is no slack on the line and

they don't get damaged. Our Spooling units can be equipped with a filling pump in order to monitor the pressure during running in hole (if the injection line gets damaged the pressure suddenly decreases) and with a Half moon sheave which serves to guide the injection line straight into the well.



## Electric heaters

SIVAM designs and assembles heating units to increase crude oil temperature thus reducing its viscosity and making it possible to be pumped easily through the pipe lines. The system utilizes heating elements fed by an external source of electricity. Output oil temperature is monitored by the control panel.



# Equipped special containers

Sivam engineers various sized containers equipped and personalized to meet our customer's needs.

Sivam can modify containers with special configurations, used for various purposes, according to our customer's specific requirements.

Some of our most requested configurations are:

- Workshop units
- Office units
- Workshop/office units
- Dressing room/office units
- Dressing room/workshop units
- Electrical cabinet units
- Office/meeting room units
- Breathing air units

All our special equipped containers are supplied with all the relevant certificates of compliance and conformity, both of materials and structure, in compliance with Sivam's elevated quality standards.



# Incinerators

SIVAM engineers high efficiency incinerators to fit specific client applications.

SIVAM incinerators have performed consistently and have been proven to be effective, economical, efficient, safe and easy to operate in the disposal of waste gasses.

## Environmental advantages

- Measured combustion efficiency in excess of 99.9%
- Improves air quality and reduces greenhouse gases
- No odour, soot, smoke or visible flame
- No emission of products of incomplete combustion
- Complete combustion of hydrocarbons to CO<sub>2</sub> and H<sub>2</sub>O
- Complete combustion/incineration of H<sub>2</sub>S as the temperature exceeds 600°C
- Optimal dispersion of SO<sub>2</sub> when combusting sour gas
- Efficient equipment spacing results in smaller lease/footprint
- Low impact

## Economic advantages

- Lowers operating costs and reduces fuel gas usage
- Reduces site capital costs by minimizing equipment
- Closer spacing minimizes lease size and piping costs
- Community well-being potentially avoiding costly hearings
- Single incinerator processes variable pressure waste gas streams concurrently.



# Application engineering

Sivam's engineering department carries out research and development, design, installation and maintenance and consulting to suit all our client's needs.

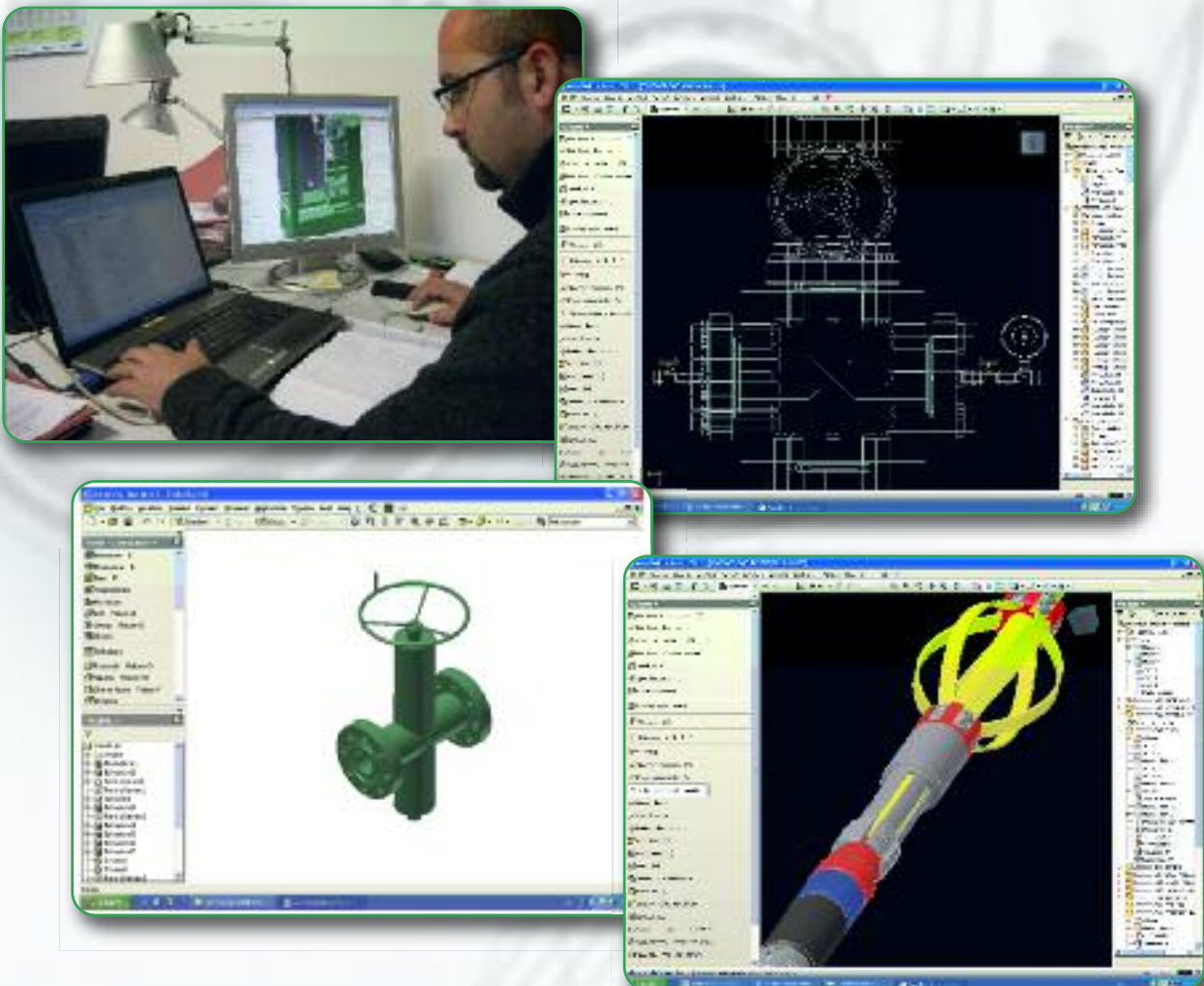
Our engineering department can offer competent and professional assistance in the following areas:

- Hydropneumatic plant engineering
- Piping: hydraulic and pneumatic
- Mechanical systems
- Oilfield equipment upon client's specific requests
- Metallic carpentry (silos and metallic structures)
- Manufacturing studies for the production of casted pieces

Our engineering department used highly advanced 3D design software that constructs virtual simulations, reducing the possibility of errors and helps to foresee any modification or improvements needed during the design phase of a project.

The Department is capable of carrying out tests and controls in all areas such as NDT, pressure tests and functional tests.

Sivam's engineering department is also available for special combinations of power cable and hydraulic or mono-conductor lines for any size tubing.





### Adjustable check valve

Check valve used during cementing on coiled tubing unit, designed for an Italian customer. This valve was studied taking into consideration the volume of cement used, the depth and abrasive effect of the cement. The seal elements were made in rubber and "derlin" to offer a greater resistance against the abrasive effect of the cement.

Max od : 1"-11/16"

Pressure setting : 900-1500 psi



### Calibrated Choke for Bridge Plug

System for the reduced flow of the bridge plug for 9" and 13" casing with reduction to ID = 1/32" (0,8 mm), designed for French customer. Seen the high speed of fluid passage, tungsten carbide was used for the choke.



### ON-OFF Connector - Easy in

Maximum length : 715 ± 720

Max o.d. : 94 mm

Total stroke : 101 mm

Maximum tensile : 40.000 lbs (18.200 Kg) Maximum pressure with plug : 8500 P.S.I. Connection : 2-3/8 EU-BOX x PIN



### Sand Silos

Silos for transportation of sand, pyramid shaped bottom, with pneumatic actuated valve for offshore use, designed for Italian customer.

Volume nom. : 21 mc Dim. : 2900x2500x8200

# Rental equipment division

SIVAM offers the following equipment with or without personnel on a rental basis: Powerlift and XL Hydraulic Pumping Units, Spooling Unit and Half moon sheave, Acoustic Well Sounder & Dynamometer, Incinerator, Off-Shore basket, and Zeus (Critical Well Safety Unit).

## COMPLEMENTARY EQUIPMENT AVAILABLE ON A RENTAL BASIS:

- Hydropneumatic pumps for pressure tests – 5.000, 15.000 and 30.000 psi range
- Pressure recorders
- Power generators – various sizes available
- Compressors – from 100 to 500 lt. – from 100 to 4500 psi (breathing air)
- Lighting systems for job sites – explosion proof and non
- Portable office boxes, portable WC boxes
- Fluid displacement pumps, High capacity centrifuge pumps
- Water and oil tanks, Nitrogen bottles with pressure regulators
- Test subs
- Industrial Hydrocleaners
- Submersed electrical pumps
- Hydraulic jack for wellheads
- Manual and hydraulic grease pumps and grubbers



# Off-Shore Baskets

Sivam offers Off-Shore baskets on rental basis. The baskets are certified according to EN ISO 12079 and DNV 2.7.1. As shown in chart below, various sizes that meet our Client's needs are available.

Type	External Dimensions	Internal Dimensions	Tare/Capacity	Image
<b>1650</b>	Length: 1650 mm Width: 1650 mm Height: 1630 mm	Length: 1450 mm Width: 1450 mm Height: 1340 mm	470 Kg/ 5000 Kg	
<b>1800</b>	Length: 1800 mm Width: 1200 mm Height: 1605 mm	Length: 1680 mm Width: 1080 mm Height: 1310 mm	400 Kg/ 2000 Kg	
<b>2000</b>	Length: 2000 mm Width: 600 mm Height: 850 mm	Length: 1800 mm Width: 400 mm Height: 560 mm	470 Kg/ 5000 Kg	
<b>2050</b>	Length: 2150 mm Width: 1050 mm Height: 898 mm	Length: 2050 mm Width: 950 mm Height: 600 mm	450 Kg/ 500 Kg	
<b>2220</b>	Length: 2200 mm Width: 1200 mm Height: 1285 mm	Length: 2000 mm Width: 1000 mm Height: 1002 mm	650 Kg/ 5000 Kg	
<b>3000</b>	Length: 3000 mm Width: 600 mm Height: 850 mm	Length: 2800 mm Width: 400 mm Height: 560 mm	630 Kg/ 5000 Kg	
<b>3120</b>	Length: 2250 mm Width: 3120 mm Height: 1612 mm	Length: 2050 mm Width: 2920 mm Height: 1343 mm	1500 Kg/ 10000 Kg	
<b>4000</b>	Length: 4000 mm Width: 1000 mm Height: 1000 mm	Length: 3800 mm Width: 800 mm Height: 720 mm	1100 Kg/ 10000 Kg	
<b>6000</b>	Length: 6000 mm Width: 1000 mm Height: 1000 mm	Length: 6000 mm Width: 1200 mm Height: 1002 mm	1430 Kg/ 5000 Kg	
<b>6200</b>	Length: 6200 mm Width: 1400 mm Height: 1285 mm	Length: 5800 mm Width: 800 mm Height: 850 mm	1400 Kg/ 5000 Kg	
<b>7000</b>	Length: 7000 mm Width: 1000 mm Height: 1000 mm	Length: 6800 mm Width: 800 mm Height: 850 mm	1600 Kg/ 5000Kg	
<b>11900</b>	Length: 11900 mm Width: 1200 mm Height: 1000 mm	Length: 11700 mm Width: 1000 mm Height: 850 mm	2650 Kg/ 10000 Kg	
<b>19300</b>	Length: 19300 mm Width: 1200 mm Height: 1000 mm	Length: 19100 mm Width: 1000 mm Height: 960 mm	4800 Kg/ 10000 Kg	

# Drilling & Completions Solutions, Secondary Recovery Products & Services Division

SIVAM provides the following completion products:

- Completion Packers and Accessories
- Thru Tubing Packers
- Inflatable Packers
- External Casing Packers
- Coiled Tubing Accessories
- Casing & Tubing
- Control Lines
- Liner Hanger and accessories
- Cement Retainer
- Bridge Plug
- Seating Nipple
- Nipples
- Sliding Sleeves
- Check Valve
- Gate Valves
- Chemical Products
- Drilling Bits
- Flow line & blast joint

We have a large stock of these products to meet the needs of our Customers and we provide specialized technical support for the installation in wells.

SIVAM is able to provide a consultancy service which, starting from the analysis of well data and through the use of specialized software such as Rod Star-D, allows our customers to optimize the design of the rod string.



SIVAM is able, through careful market research, to offer the supply and the installation of the following materials:

- Sucker Rods
- Pony Rods
- Polish Rods
- Guide Rods
- Sinker Bars
- Stuffing Box
- Insert Pump
- Tubing Pump
- Anchor Pump
- Gas Separators
- BOP

SIVAM also offers the following services:

- Maintenance and industrial services
- Maintenance of well sites
- Wellhead maintenance and valve greasing and wall thickness tests
- Wellhead greasing and pressure tests



# Industrial division

SIVAM designs, supplies and installs water treatment plants for industrial yards. Our engineering department offers customized advice in order to provide the most suitable solution to each specific request.



## C1A • FUEL TANKS

Storage tanks for diesel oil complete of electropump, flexible pipe, flow meter, filters and gun for oil distribution.



## A1 • POLYETHYLENE SAFETY DRUM HOLDER

Shockproof, antacid, monofusion seamless container, stackable when empty, and up to 3 pieces can be piled when full. Screw lid with watertight gasket. Yellow.



## A4 • OPEN OR CLOSED BOTTOM STAVED CONTAINER

Metallic container with staved closed bottom with capacity from 800 to 2000 kg. Complete of moving slides with forklift and transpallet for raising to empty. Stackable. These containers are emptied automatically from the forklift truck by means of a lever.



## A6 • CONTAINERS FOR USED ACCUMULATORS

**Light version:** Container formed with a unique fusion in antacid-shockproof polyethylene, watertight body. With structural reinforcements on the bottom and the walls, hardening ribbing, with 4 feet of support to earth. Possibility of movement with transpallet and forklift. Lid equipped with antirain and antipowder edge



**Heavy version:** Construction with reinforced and staved carbon steel, rectangular plant, mounting for overlap, inferior base for movement with forklift and transpallet. Inner tank in antacid pvc with a perfect watertight, galvanized removable upper lid.



## A7 • USED OIL CONTAINER

Two part container for collection and storage of used oils, manufactured in compliance with the applicable regulations. Upper part complete of removable pierced grate to drain filters and upper hatch with removable threaded cover with visual floating level pointer and with inox exhaust pipe charged with active charcoal. External and lower tank, in carbon steel sheet, acting as a safety tank for leak containment with perfect watertightness. Capacity 300 lt. or 500 lt.



## A7 /A • USED FILTERS CONTAINER

**Lt. 100:** Containers in sheet steel, cylindrical room, flat-bottom, upper lid openable with handle; lateral handles for grip. Yellow color. Inner container in polyethylene complete with removable grate for oil drainage.



## B6 • SINGLEWALL PROTECTIVE BOX FOR DRUMS

Galvanized steel for permanent exposure to the atmospheric agents. Closed room with fixed roof. Frontal door with 2 clasped shutters with key lock, anti-spill collection tank integrated with synthetic antacid grate. Ability to control in compliance with the enforced technical norms on storage. Hydraulic tested for watertightness.



## EMERGENCY SPILL KIT

Emergency spill kit containing oil absorbing pads, booms, oclansorb, gloves, safety glasses, cleaning kit. Skid mountable for off-shore use.



## A2 • ANTI-SPILL CONTAINER

Anti-spill container as per safety norms in galvanized sheet without paint job. Ability to control in compliance with enforced norms. Complete with anti-acid grill in polyethylene for tank or drum support. Designed to be positioned on standard skids for easy fork-lift access for stacking/transporting.



## A3 • STEEL CHASSIS FOR DRUMS

Steel chassis for horizontal drum support. Version for 217 lt drums or 60 lt drums or even for both together.



## D4 • POLYETHYLENE CUBIC TANK - LIGHT VERSION

IBC approval with UN - RID - ADR - IMDG norms for street and marine transport of dangerous liquid substances in compliance with the enforced norms. Antacid polyethylene tank through blow moulding. Tubular cage chassis in galvanized steel. Wood base, polyethylene, galvanized steel. Validity homologation 2,5 years from the production date. Integrated discharge valve.



## D5 • STEEL DRUMS

Steel drums accredited with UN - RID - ADR norms for street and marine transport



## D9 • POLYETHYLENE DRUMS WITH REMOVABLE LID

Sanctioned drums with UN - RID - ADR OMI IMDG OACI - RTMD norms for street, railway, marine and aerial transport of dangerous solid substances in compliance with the enforced legislative dispositions. Antacid polyethylene tank through blow moulding. Watertight closing with removable lid.



## D11 • BIG BAGS

Big, antacid, water-repellent, polypropylene cloth bag. Highly cut and snag resistant. With 4 raising suspenders. Double-stitched for safety.



## E3 • POLYETHYLENE BIN WITH 2 WHEELS

Washable and disinfectable antacid polyethylene shockproof bins. With manual opening lid and two lateral wheels. DIN fastening. Colors: green, gray, blue, yellow, brown.



## C1 • STORAGE TANKS

Storage tanks of different dimensions, in polyethylene, in galvanized steel or in carbon steel.

# S.I.S.

UNITED SAFETY INT. GROUP

SERVIZI INTEGRATI DI SICUREZZA S.R.L.

Servizi Integrati di Sicurezza Srl (S.I.S.) was born on January 1st, 2000 as a spin-off of United Safety International, Canada, with an acquired 25 year experience in safety services for drilling and rigless operations, for plant turnarounds, including hazardous management protective equipment, safety personnel and safety training.

## Oil & Gas

## The Global Leader in Safety Solutions



### H2S Safety Service and Safety Personnel

Management of hazardous environments in accordance with the highest safety standards. Safety Supervisors and Safety Officers.



### Safety Training

H2S Awareness and other Training Courses on request on each site in any part of our geographical area of activity.



### Equipment Rental

Innovative and state-of-the-art equipment to provide customized safety equipment packages of high quality, for total protection for the respiratory system and for explosive and toxic atmospheres.



## Industrial Safety



### Turnaround & Shutdown Projects and Confined Space Entry

Assistance and support for Refineries and Petrochemical Plants.



### Safety Personnel

Organization and control of the operational activities and HSE initiatives, resource management and organization of on-site safety meetings and training.



### On-Site Equipment Rental and Equipment Management & Maintenance

Safety equipment on a 24/7 "on-the-spot" basis.



[www.sisworld.net](http://www.sisworld.net)

[info@sisworld.net](mailto:info@sisworld.net)



SIVAM srl  
Via Mare Adriatico 72/F  
65010 Spoltore PE Italy  
Tel. +39 085 4972130 +39 085 4972531 Fax. +39 085 4973667  
[www.sivam.com](http://www.sivam.com) [sivam@sivam.com](mailto:sivam@sivam.com)