

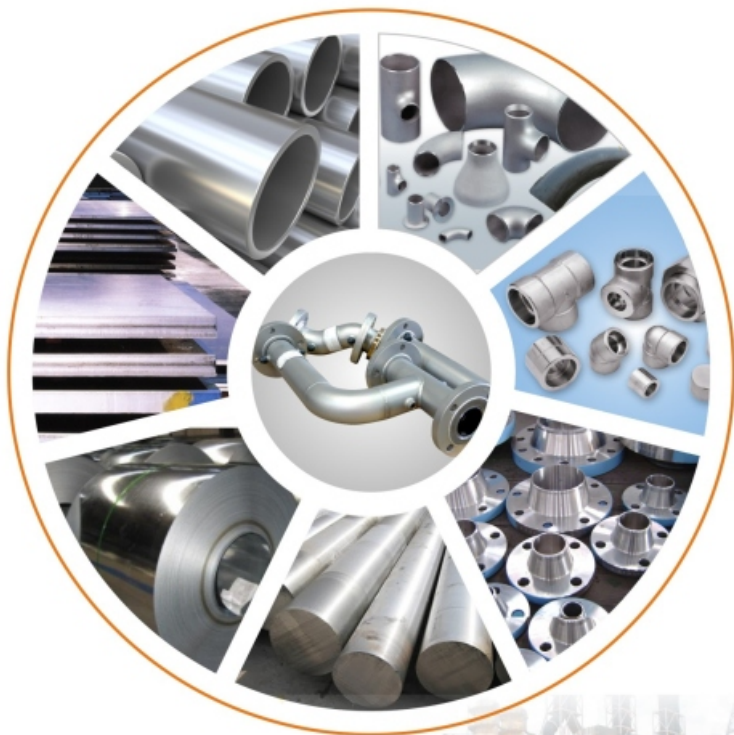


MESTA INC

ISO 9001:2015

AWARDED 1 NATIONAL AWARD

Nickel Alloys • Stainless Steel • Alloy Steel





MESTA INC

ISO 9001:2015

INTRODUCTION

Nickel Alloys • Stainless Steel • Alloy Steel

Manufacturing

Butt Weld Pipe Fittings & Flanges

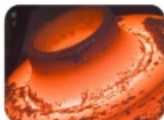
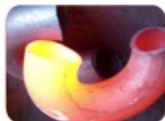
This is to introduce ourselves as the most reliable outstanding partners for manufacturing of butt welding pipe fittings, socket weld, pipe fittings, flanges & tubular components in all kinds of steel. Our panel of 25 years past experienced manufacturers ensures excellent quality fittings meeting exacting standards of National & International quality.

These Pipe Fitting are manufactured from ferrous metals & non ferrous metals such as Carbon Steel, Alloy Steel, Low Temperature Carbon Steel & Stainless Steel, Hastelloy, Titanium, Inconel, Monel, etc. Both Seamless and E.R.W. Pipe Fittings are produced by our special manufacturing process involving either hot or cold forming. We are fully capable of manufacturing Pipe fittings made to customer's specifications in terms of type, dimensions, material & quantity under any third party inspection.

These Pipe Fittings are perfectly round, rugged, leak proof, corrosion resistant (Where ever required), meeting all the requirements to ASTM/BS/DIN/ISI codes. These quality fittings extend the life of piping systems, facilitate direct pipe welding, permit compact installing a piping network.

FACILITIES

- Hydraulic Press
- Oil Fired Furnace with Temp. Recorder
- Universal Testing Machine
- Hardness Tester
- Chemical Laboratory
- Hacksaw Cutting Machines
- Lathe Machines
- Plate Rolling Machines
- Grinding Machines
- Drilling Machines
- Motor Generator Welding Set (Advani)
- AC Welding Sets (Advani)
- DC Rectifier Welding Sets (Advani)
- Computer & Software





MESTA INC

ISO 9001:2015

Nickel Alloys • Stainless Steel • Alloy Steel

AWARDED 1 NATIONAL AWARD

QUALITY EXCELLENCE



"INDIAN ACHIEVERS" AWARD 2016

**MESTA INC**

ISO 9001:2015

Nickel Alloys • Stainless Steel • Alloy Steel



Pipe Fittings & Bends (Buttweld)

Test Certificate

Manufacturer Test Certification
En 3.1 & 3.2, IBR Test Certificate

Size

Fittings : Seamless 15NB To 600NB
 : Split / Welded 100NB To 1200NB
 Schedule : Sch. 5 to Sch. XXS

Types

Stubend - (Long & Short)	Elbow (45 DEG, 90 DEG, 180 DEG)
U Bend	Tee - (Barred, Equal, Reducing)
End Cap	Reducer - (Concentric & Eccentric)
Laterals	Nipple - (Swage & Barrel)

Stainless Steel & Duplex Steel

Stainless Steel : ASTM A 403 WP - 304/304H/304L/316/316H
 316/316Ti, 309, 310, 317L, 321, 347, 904L

Duplex & Super Duplex : Standard
 ASTM A815 - UNS S31803, S32205 (2205)
 Lean
 ASTM A815, 790 - UNS S32304 (2304)
 Super Duplex
 ASTM A815, 790 - UNS S32750 (2507)
 UNS S32760 (Zeron 100)

Hi-Nickel & Titanium

Hi-Nickel

Nickel : ASTM B 366 N02200, N02201

Inconel : ASTM B 366 N06600, N06601, N06617
 ASTM B 366 N07718
 ASTM B 366 N06625

Incoloy : ASTM B 366 N08800, N08810
 ASTM B 366 N08825
 ASTM B 366 N08020

Hastelloy : ASTM B 366 N10276, N06022
 ASTM B 366 N10665
 ASTM B 366 N06455

Titanium

Commercially : ASTM B 363

Titanium Pure : Gr.1 R 56250 (CP4) Gr.2 R 50400 (CP3)
 Gr.3 R 50550 (CP2) Gr.4 R 50700 (CP1)
 Gr.7 R 52400 Gr.11 R 52250

Titanium Alloys : ASTM B 363
 Gr.5 R 56400 (6Al-4V)
 Gr.23 R 56401 (6Al-4V-ELI)
 Gr.12 R 53400

Cupro Nickel

ASTM B 171 C70600 (90:10),
 ASTM B 171 C71500 (70:30)

Monel

ASTM B 366 N04400
 DIN N05500

Alloy Steel & Carbon Steel

Alloy Steel : ASTM A 234 WPB WP5, WP9, WP11,
 WP12, WP22, WP91

Carbon Steel : ASTM A 234 WPB, IS 1239 PART II

Low Temp. CS : ASTM A-420 WPL6

Other Service : Hot Dip Galvanizing, Sand Blasting

Specializing in:

Hi-Nickel & Stainless Steel Series

Inconel®, Incoloy®, Monel®, Hastelloy®, Duplex®
 are Registered Trade Marks of their Respective Owners.



MESTA INC

ISO 9001:2015

Nickel Alloys • Stainless Steel • Alloy Steel



Forged Fittings

Test Certificate

Manufacturer Test Certification
En 3.1 & 3.2, IBR Test Certificate

Size

Size : 15NB To 100NB (Socket Weld & Threaded)
Class : 3000#, 6000#, 9000#, In ANSI B 16.11

Types

Elbow (45 & 90 Deg)	Coupling
Tee	Cap
Union	Plug
Cross	Bushing
Swage Nipple	Boss

Stainless Steel & Duplex Steel

Stainless Steel : ASTM A 182F - 304/304H/304L/316/316H
316/316Ti, 309, 310, 317L, 321, 347, 904L
Duplex & Super Duplex : ASTM A 182 - F51, F53, F55

Hi-Nickel & Titanium

Hi-Nickel

Nickel : ASTM B 564 N02200, N02201
Inconel : ASTM B 564 N06600, N06601, N06617
ASTM B 564 N07718
ASTM B 564 N06625
Incoloy : ASTM B 564 N08800, N08810
ASTM B 564 N08825
ASTM B 564 N08020
Hastelloy : ASTM B 564 N10276, N06022
ASTM B 564 N10665
ASTM B 564 N06455

Titanium

Commercially : ASTM B 381
Titanium Pure : Gr.1 R 56250 (CP4) Gr.2 R 50400 (CP3)
Gr.3 R 50550 (CP2) Gr.4 R 50700 (CP1)
Gr.7 R 52400 Gr.11 R 52250

Titanium Alloys : ASTM B 381
Gr.5 R 56400 (6Al-4V)
Gr.23 R 56401 (6Al-4V-ELI)
Gr.12 R 53400

Cupro Nickel

ASTM B 171 C70600 (90:10),
ASTM B 171 C71500 (70:30)

Monel

ASTM B 564 N04400
DIN N05500

Alloy Steel & Carbon Steel

Alloy Steel : ASTM A 234 WPB WP5, WP9, WP11,
WP12, WP91
Carbon Steel : ASTM A 234 WPB, IS 1239 PART II
Low Temp. CS : ASTM A-420 WPL6
Other Service : Hot Dip Galvanizing, Sand Blasting

Specializing in: Hi-Nickel & Stainless Steel Series

Inconel®, Incoloy®, Monel®, Hastelloy®, Duplex®
are Registered Trade Marks of their Respective Owners.



MESTA INC

ISO 9001:2015

Nickel Alloys • Stainless Steel • Alloy Steel



Flanges

Test Certificate

Manufacturer Test Certification
En 3.1 & 3.2, IBR Test Certificate

Size

15NB To 1200NB, ANSI B 16.5

Class

150#, 300#, 600#, 900#, 1500#, 2500#,

Types

Weldneck	Screwed / Threaded
Socketweld	Long Weldneck
Slip on	Lapped Joint
Blind	Spectacle Blind

Stainless Steel & Duplex Steel

Stainless Steel : ASTM A 182F - 304/304H/304L/316/
316H/316/316Ti, 309, 310, 317L, 321,
347, 904L

Duplex & Super Duplex : ASTM A 182 - F51, F53, F55

Hi-Nickel & Titanium

Hi-Nickel

Nickel	: ASTM B 564 N02200, N02201
Inconel	: ASTM B 564 N06600, N06601, N06617 ASTM B 564 N07718 ASTM B 564 N06625
Incoloy	: ASTM B 564 N08800, N08810 ASTM B 564 N08825 ASTM B 564 N08020
Hastelloy	: ASTM B 564 N10276, N06022 ASTM B 564 N10665 ASTM B 564 N06455

Titanium

Commercially : ASTM B 861, 862, 338 Gr.1 R 56250 (CP4)

Titanium Pure : Gr.2 R 50400 (CP3) Gr.3 R 50550 (CP2)
Gr.4 R 50700 (CP1) Gr.7 R 52400
Gr.11 R 52250

Titanium Alloys : ASTM B 861, 862, 338 Gr.5 R 56400 (6Al-4V)
Gr.23 R 56401 (6Al-4V-ELI)
Gr.12 R 53400

Cupro Nickel

ASTM B 171 C70600 (90:10),
ASTM B 171 C71500 (70:30)

Monel

ASTM B 564 N04400
DIN N05500

Alloy Steel & Carbon Steel

Alloy Steel : ASTM A 234 WPB WPS, WP9, WP11,
WP12, WP91

Carbon Steel : ASTM A 234 WPB, IS 1239 PART II

Low Temp. CS : ASTM A-420 WPL6

Other Service : Hot Dip Galvanizing, Sand Blasting

Specializing in: Large Diameter CS Pipes & Duplex Steel

Inconel®, Incoloy®, Monel®, Hastelloy®, Duplex®
are Registered Trade Marks of their Respective Owners.



Long Radius Piggable Bends

Test Certificate

Manufacturer Test Certification
En 3.1 & 3.2, IBR Test Certificate

Size

15NB to 900NB
Schedule : Sch. 5 to Sch. XXS

Bend - Angle

10 Degree To 360 Degree

" J " & " S " Bends

We Manufacture As Per Drawing

Bend - Radius

We Manufacture Upto 22 D

Dimension Standard

ASME/ ANSI B16.9, MSS SP - 44 & 75
Also As Per Drawing

Materials

Stainless Steel, Duplex, Super Duplex, Alloy Steel,
Carbon Steel, Mild Steel, WPHY A860 X 42,
WPHY A860 X 52, WPHY A860 X 60,
WPHY A860 X 65, WPHY A860 X 70,
WPHY A860 X 80, LTCS Etc.

High Nickel Alloy

Titanium, Inconel, Monel, Hastelloy,
Cupro Nickel, Etc.





Piping Spool Fabrication

Test Certificate

Manufacturer Test Certification
En 3.1 & 3.2, IBR Test Certificate

Pipe Spool typically are lengths of pipe fitting with flanged ends & plain ends that have access fittings welded on in pre-determined locations. The fitting holes are pre-drilled and ready for the installation of monitoring equipment.

PIPING / PRE FABRICATION SPOOLS ARE MANUFACTURE AS PER ISOMETRIC DRAWINGS

Prefabricating pipe spools have certain advantages, such as :

- Supervision and verification of fitting location & weld quality.
- Pre-drilling & preparation of fitting without being under full operating conditions.
- Ability to apply specialty coatings.
- Pressure & Weld testing in a safe shop environment.
- Ease of installation in the field.





MESTA INC

ISO 9001:2015

Nickel Alloys • Stainless Steel • Alloy Steel



Fabricated Fittings

Test Certificate

Manufacturer Test Certification
En 3.1 & 3.2, IBR Test Certificate

Products

- Pipe Header
- Heat Exchanger
- Critical Fabrication As Per Drawing
- Y Pieces
- Lateral Tee
- Flow Tee
- Bar Tee
- Fabricated Mitre Bends
- Puddle Pipe / Fittings
- Tank & Vessels

NDT Test

- 100% Radiography
- 100% D.P.
- 100% M.P.I.
- 100% Hydro

High Nickel Alloy

Titanium, Inconel, Monel, Hastelloy,
Cupro Nickel, Etc.

Materials

Stainless Steel, Duplex, Super Duplex, Alloy Steel,
Carbon Steel, Mild Steel,

Fabricated Fittings As Per Drawing





Casting Products

Test Certificate

Manufacturer Test Certification
En 3.1 & 3.2, IBR Test Certificate

We are Specialized in Ferrous & Non Ferrous Castings As Per Drawings

Casting Products

- Flanged Elbow
- Flanged Equal Tee & Unequal Tee
- Flanged Reducer Concentric & Eccentric
- Flanged Pipe
- Bush
- Spare Parts
- As Per Drawing & Client Requirement

NDT Test

- 100% Radiography
- 100% D.P.
- 100% M.P.I.
- 100% Hydro

High Nickel Alloy

Titanium, Inconel, Monel, Hastelloy,
Cupro Nickel, Etc.

Materials

PB2, LG2, LG4, Gun Metal, Aluminum
Bronze, Aluminum Alloys, Bronze, Cobalts,
Copper, Berliyum & Cardium Copper Etc.

Standards

BS 1400 & As Per Drawing





MESTA INC

ISO 9001:2015

Nickel Alloys • Stainless Steel • Alloy Steel



Coating

Test Certificate

Manufacturer Test Certification
En 3.1 & 3.2, IBR Test Certificate

We are Specialized in Internal & External Coatings

We Are Engaged In Offering A Comprehensive Range of Coatings (Internal & External). The Offered Pipe, Fittings, Fabrication Jobs, Spools Are Appreciated for their Excellence Abrasion & Anti Corrosion Properties.

Range

50NB To 1800NB

Type

Single or Double Length, Fabricated Jobs, Spools, Puddle Spools, Pipe Fittings, Etc.

Ends

Plain, Bevelled, Flanged Ends

Methods

Brush, Roller, Air Spray

Types of Coatings

Epoxy Coating, Fusion Bonded Coating, Wrapping Coating (3LPE) , Polyethylene, Polypropelene, Also As Per Client Requirements.

Testings

DFT, Holiday Test, Peel Test, Etc.

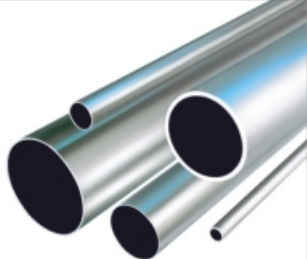




MESTA INC

ISO 9001:2015

Nickel Alloys • Stainless Steel • Alloy Steel



Pipes & Tubes

Size

Pipes	: 1/4" to 48"
Schedule	: Sch. 5 to Sch. XXS
Tubes	: 6 mm OD to 219.08 mm OD
Thickness	: 0.6mm-10mm-Gauge : 22 SWG/BWG to 10 SWG/BWG
Form	: Round, Square, Rectangle, Coil, 'U' Shape
Length	: Standard Length & Cut Length

Stainless Steel & Duplex Steel

Stainless Steel : ASTM A 312, 249, 269, 312, 358 - TP 304, 304L, 316, 316L, 316Ti, 309, 310, 317, 317L, 321, 347, 904L, SMO 254

Duplex & : Standard

Super Duplex : ASTM A 789, 790 - UNS S31803, S32205 (2205)
Lean
 ASTM A 789, 790 - UNS S32304 (2304)
Super Duplex
 ASTM A 789, 790 - UNS S32750 (2507)
 UNS S32760 (Zeron 100)

Hi-Nickel & Titanium

Hi-Nickel

Nickel	: ASTM B 161, 622, N02200, N02201
Inconel	: ASTM B 167, 517, 163 N06600, N06601, N06617 ASTM B 444 N07718 ASTM B 444, 705, 704, N06625
Incoloy	: ASTM B 407, 154, 163, 515, N08800, N08810 ASTM B 423 N08825 ASTM B 729, 464, 468 N08020
Hastelloy	: ASTM B 622, 619, 626 N10276, N06022 N10665, N06455

Test Certificate

Manufacturer Test Certification
 En 3.1 & 3.2, IBR Test Certificate

Trading Unit

Titanium

Commercially	: ASTM B 861, 862, 338
Pure	Gr.1 R 56250 (CP4) Gr.2 R 50400 (CP3) Gr.3 R 50550 (CP2) Gr.4 R 50700 (CP1) Gr.7 R 52400 Gr.11 R 52250
Alloys	: ASTM B 861, 862, 338 Gr.5 R 56400 (6Al-4V) Gr.23 R 56401 (6Al-4V-ELI) Gr.12 R 53400

Cupro Nickel

ASTM B111 C70600 (90:10), C71500 (70:30)

Monel

ASTM B165, B 725, B163 N04400, N05500,

Alloy Steel, Carbon Steel & LTCS

Alloy Steel	: ASTM A335 Gr. P5, P9, P11, P22 & P91
Low Alloy	: ASTM A 213 - T-11, T-12, T-22,
Steel Tube	T-5, T-9 etc.
Carbon Steel	: ASTM A 106 Gr. B, ASTM A53
Carbon Steel Tube	: BS 3059 Gr. 360 / 440, SA 179, SA / ASTM A210 Gr. A1
Low Temp. (LTCS)	: ASTM A 333 Gr. 6
Line Pipe	: API 5L, X 42, 46, 52, 56, 60, 70
Mild Steel &	: IS 1239, IS 3589
Galvanized	

Specializing in:

Large Diameter CS Pipes & Duplex Steel

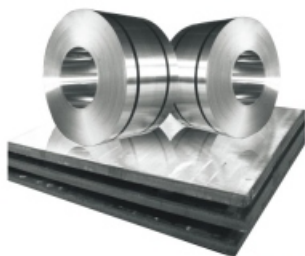
Inconel®, Incoloy®, Monel®, Hastelloy®, Duplex® are Registered Trade Marks of their Respective Owners.



MESTA INC

ISO 9001:2015

Nickel Alloys • Stainless Steel • Alloy Steel



Sheets, Plates & Coils

Size

- Sheets** : 0.8mm to 4mm thk. in 1000 upto 2000 mm Width & 2000 upto 6000 Length
- Plates** : 5mm to 100 mm thk. In 1000 upto 2000 mm Width & 2000 upto 8000 Length
- Coils** : 0.1 mm thk. to 12mm thk. in 10mm upto 1500 Width
- Foils** : 0.01 mm thk. to 0.3 mm thk. in any width
- Strips** : 1mm thk. to 100 mm thk. in 10 mm upto 900 mm Width & 1000 upto 6000 Length

Finish

HR No.1, 2B, BA, Matt, Matt+1 side PVC, BA + 1side PVC, Chequered

Stainless Steel & Duplex Steel

- Stainless Steel** : ASTM A240 304/304L/316/316L/316Ti/309/310/317/317L/321/347/409/410/430/904L/SMO 254 / AL6XN
- Duplex & Super Duplex** : **Standard**
ASTM A240 - UNS S31803/S32205 (2205)
Lean
ASTM A240 - UNS S32304 (2304)
Super Duplex
ASTM A240 - UNS S32750 (2507)
ASTM A240 - UNS S32760 (Zeron 100)

Hi-Nickel & Titanium

Hi-Nickel

- Nickel** : ASTM B162 N02200, N02201
- Inconel** : ASTM B 168 N06600, N06601, N06617
ASTM B 670 N07718
ASTM B 443 N06625
- Incoloy** : ASTM B 409 N08800, N08810
ASTM B 424 N08825
ASTM B 462 N08020
- Hastelloy** : ASTM B 575 N10276, N06022
ASTM B 333 N10665

Trading Unit

Titanium

- Commercially** : ASTM B 265
- Titanium Pure** : Gr.1 R 56250 (CP4) Gr.2 R 50400 (CP3)
Gr.3 R 50550 (CP2) Gr.4 R 50700 (CP1)
Gr.7 R 52400 Gr.11 R 52250
- Titanium Alloys** : ASTM B 265
Gr.5 R 56400 (6Al-4V)
Gr.23 R 56401 (6Al-4V-ELI)
Gr.12 R 53400

Cupro Nickel

ASTM B171 C70600 (90:10), C71500 (70:30)

Monel

ASTM B127 N04400, DIN N05500

Alloy Steel, Carbon Steel / Mild Steel

- Alloy Steel Pipe** : ASTM A387 Gr. 11, 12, 22, 5, 91 (CL 1/2)
- Carbon Steel** : ASTM A 36
S275 JR
IS 2062 Gr. A/B

Aluminium

- ASTM B 928
5083 (A95083), 5086 (A95086),
5052 (A95052) T6061 (A96061)

Spring Steel Coils

CR C55, C80, C62, C45

Quenched & Tempered

ASTM A537 CL.1 & 2

Boiler Quality

SA 516 Gr. 70

Hardox

Hardox 400 / 500

Specializing in:

Hi-Nickel & Stainless Steel Series

Inconel®, Incoloy®, Monel®, Hastelloy®, Duplex® are Registered Trade Marks of their Respective Owners.

Stainless Steel Pipe Dimension As Per Astm And Weight-kg. Per Mtr. (ansi B 36.19-1965)

Nominal Bore		Outside Diameter	Schedule 5S		Schedule 10S		Schedule 40S		Schedule 80S		Schedule 160S		Schedule XXS	
mm	INCH	mm	Wt mm	Weight (Kg/m)	Wt mm	Weight (Kg/m)	Wt mm	Weight (Kg/m)	Wt mm	Weight (Kg/m)	Wt mm	Weight (Kg/m)	Wt mm	Weight (Kg/m)
3	1/8	10.3	1.24	0.276	1.24	0.28	1.73	0.37	2.41	0.47	-	-	-	-
6	1/4	13.7	1.24	0.390	1.65	0.49	2.24	0.631	3.02	0.80	-	-	-	-
10	3/8	17.1	1.24	0.490	1.65	0.63	2.31	0.845	3.20	1.10	-	-	-	-
15	1/2	21.3	1.65	0.800	2.11	1.00	2.77	1.27	3.75	1.62	4.75	1.94	7.47	2.55
20	3/4	26.7	1.65	1.03	2.11	1.28	2.87	1.68	3.91	2.20	5.54	2.89	7.82	3.63
25	1	33.4	1.65	1.30	2.77	2.09	3.38	2.50	4.55	3.24	6.35	4.24	9.09	5.45
32	1.1/4	42.2	1.65	1.65	2.77	2.70	3.56	3.38	4.85	4.47	6.35	5.61	9.70	7.77
40	1.1/2	48.3	1.65	1.91	2.77	3.11	3.68	4.05	5.08	5.41	7.14	7.25	10.16	9.54
50	2	60.3	1.65	2.40	2.77	3.93	3.91	5.44	5.54	7.48	8.74	11.1	11.07	13.44
65	2.1/2	73.0	2.11	3.69	3.05	5.26	5.16	8.63	7.01	11.4	9.53	14.9	14.2	20.39
80	3	88.9	2.11	4.51	3.05	6.45	5.49	11.30	7.62	15.2	11.1	21.3	15.24	27.65
100	4	114.3	2.11	5.84	3.05	8.36	6.02	16.07	8.56	22.3	13.49	33.54	17.12	41.03
125	5	141.3	2.77	9.47	3.40	11.57	6.55	21.8	9.53	31.97	15.88	49.11	19.05	57.43
150	6	168.3	2.77	11.32	3.40	13.84	7.11	28.3	10.97	42.7	18.2	67.56	21.95	79.22
200	8	219.1	2.77	14.79	3.76	19.96	8.18	42.6	12.7	64.6	23.0	111.2	22.23	107.8
250	10	273.1	3.40	22.63	4.19	27.78	9.27	60.5	12.7	96.0	28.6	172.4	25.40	155.15
300	12	323.9	3.96	31.25	4.57	36.00	9.52	73.88	12.7	132.0	33.32	238.76	25.40	186.97
350	14	355.6	3.96	34.36	4.78	41.3	11.13	94.59	19.05	158.08	35.71	281.70	-	-
400	16	406.4	4.19	41.56	4.78	47.29	12.7	123.30	21.41	203.33	40.46	365.11	-	-
450	18	457.2	4.19	46.80	4.78	53.42	14.27	155.80	23.8	254.36	45.71	466.40	-	-
500	20	508.0	4.78	59.25	5.54	68.71	15.09	183.42	26.19	311.2	49.99	564.68	-	-
600	24	609.6	5.54	82.47	6.35	94.45	17.48	255.41	30.96	442.08	59.54	808.22	-	-
650	26	660.4			7.92	129.40	9.53	155.32	12.70	205.97	-	-	-	-
700	28	711.2			7.92	139.47	9.53	167.44	12.70	222.13	-	-	-	-
750	30	762.0	6.35	120.15	7.92	149.55	9.53	179.56	12.70	238.28	-	-	-	-
800	32	812.8	-	-	7.92	159.62	9.53	191.69	12.70	254.44	-	-	-	-
850	34	863.6	-	-	7.92	169.64	9.53	203.74	12.70	270.50	-	-	-	-
900	36	914.4	-	-	7.92	179.77	9.53	215.93	12.70	286.75	-	-	-	-

BUTT-WELDING FITTINGS ASTM SPECIFICATION

MATERIAL SPECIFICATION FOR SEAMLESS/WELDED BUTT-WELDING PIPE-FITTINGS.

SPECIFICATION (ASTM-30002)	CHEMICAL PROPERTIES				MECHANICAL PROPERTIES				OTHERS				
	C%	Mn%	P% (Max)	S% (Max)	Cr%	Mo%	Ni%	Y _s (Min)		Y _t (Max)	Hardness (HRC)		
STAINLESS STEEL													
A 303 Gr. WP 304	0.080 Max	2.00 Max	0.045	0.030	18.0-20.0	-	8.0-11.0	515	205	28	20	-	
A 303 Gr. WP 304L	0.030 Max	2.00 Max	0.045	0.030	18.0-20.0	-	8.0-12.0	485	170	28	20	-	
A 303 Gr. WP 304H	0.04-0.10	2.00 Max	0.045	0.030	18.0-20.0	-	8.0-11.0	515	205	28	20	-	
A 303 Gr. WP 304LN	0.030 Max	2.00 Max	0.045	0.030	18.0-20.0	-	8.0-11.0	515	205	28	20	N%→0.10-0.16	
A 303 Gr. WP 309	0.20 Max	2.00 Max	0.045	0.030	22.0-24.0	-	12.0-15.0	515	205	28	20	-	
A 303 Gr. WP 310S	0.080 Max	2.00 Max	0.045	0.030	1.00 Max	2.0-3.0	19.0-22.0	515	205	28	20	-	
A 303 Gr. WP 316	0.080 Max	2.00 Max	0.045	0.030	16.0-18.0	2.0-3.0	10.0-14.0	515	205	28	20	-	
A 303 Gr. WP 316L	0.030 Max	2.00 Max	0.045	0.030	16.0-18.0	2.0-3.0	10.0-14.0	485	170	28	20	-	
A 303 Gr. WP 316H	0.04-0.10	2.00 Max	0.045	0.030	16.0-18.0	2.0-3.0	10.0-14.0	515	205	28	20	-	
A 303 Gr. WP 316LN	0.030 Max	2.00 Max	0.045	0.030	16.0-18.0	2.0-3.0	10.0-13.0	515	205	28	20	-	
A 303 Gr. WP 317	0.080 Max	2.00 Max	0.045	0.030	1.00 Max	3.0-4.0	11.0-15.0	515	205	28	20	-	
A 303 Gr. WP 317L	0.030 Max	2.00 Max	0.045	0.030	1.00 Max	3.0-4.0	11.0-15.0	515	205	28	20	-	
A 303 Gr. WP 321	0.080 Max	2.00 Max	0.045	0.030	17.0-19.0	-	9.0-12.0	515	205	28	20	T ₁ %=(6XCr)-0.70 T ₂ %=(10XCr)-1.10 Cb%=(8XCr)-1.10	
A 303 Gr. WP 321H	0.04-0.10	2.00 Max	0.045	0.030	17.0-19.0	-	9.0-12.0	515	205	28	20	-	
A 303 Gr. WP 347	0.080 Max	2.00 Max	0.045	0.030	17.0-19.0	-	9.0-12.0	515	205	28	20	-	
A 303 Gr. WP 347H	0.04-0.10	2.00 Max	0.045	0.030	17.0-19.0	-	9.0-12.0	515	205	28	20	-	
CARBON STEEL													
A 234 Gr. WPB	0.30 Max	0.29-1.06	0.050	0.058	0.10 Min	0.40 Max	0.15 Max	0.40 Max	415-655	240	30	197	Cr%→0.40 Max, W%→0.08 Max, Cb%→0.02 Max
A 234 Gr. WPC	0.35 Max	0.29-1.06	0.050	0.058	0.10 Min	0.40 Max	0.15 Max	0.40 Max	485-655	275	30	197	Cr%→0.40 Max, W%→0.08 Max, Cb%→0.02 Max
LOW TEMPERATURE CARBON STEEL													
A 420 Gr. WPL6	0.30 Max	0.50-1.35	0.035	0.040	0.15-0.40	0.30 Max	0.12 Max	0.40 Max	415-655	240	30	16.5	Cr%→0.40 Max, W%→0.08 Max, Cb%→0.02 Max Impact Test-6°C, A17-314
A 420 Gr. WPL 3	0.20 Max	0.31-0.64	0.050	0.050	0.13-0.37	-	-	3.20-3.80	450-620	240	30	197	Impact Test-6°C, A17-314
ALLOY STEEL													
A 234 Gr. WP 1	0.28 Max	0.30-0.90	0.045	0.045	0.10-0.50	-	0.44-0.65	-	380-550	205	30	20	197
A 234 Gr. WP 5	0.15 Max	0.30-0.60	0.040	0.030	0.50 Max	-	0.44-0.65	-	415-585	205	30	20	217
A 234 Gr. WP 9	0.15 Max	0.30-0.60	0.030	0.030	0.50 Max	8.0-10.0	0.90-1.10	-	415-585	205	30	20	217
A 234 Gr. WP 11 CL1	0.05-0.15	0.30-0.60	0.030	0.030	0.50-1.0	1.0-1.5	0.44-0.65	-	415-585	205	30	20	197
A 234 Gr. WP 11 CL2	0.05-0.20	0.30-0.80	0.040	0.040	0.50-1.0	1.0-1.5	0.44-0.65	-	485-655	275	30	20	197
A 234 Gr. WP 11 CL3	0.05-0.20	0.30-0.80	0.040	0.040	0.50-1.0	1.0-1.5	0.44-0.65	-	520-690	310	30	20	197
A 234 Gr. WP 12 CL1	0.05-0.20	0.30-0.80	0.045	0.045	0.60 Max	0.80-1.25	0.44-0.65	-	415-585	220	30	20	197
A 234 Gr. WP 12 CL2	0.05-0.20	0.30-0.80	0.045	0.045	0.60 Max	0.80-1.25	0.44-0.65	-	485-655	275	30	20	197
A 234 Gr. WP 22 CL1	0.05-0.15	0.30-0.60	0.040	0.040	0.50 Max	1.90-2.60	0.87-1.13	-	415-585	205	30	20	197
A 234 Gr. WP 22 CL3	0.05-0.15	0.30-0.60	0.040	0.040	0.50 Max	1.90-2.60	0.87-1.13	-	520-690	310	30	20	197
A 234 Gr. WP 91	0.06-0.12	0.30-0.60	0.020	0.010	0.20-0.50	8.0-9.5	0.85-1.05	0.40 Max	585-760	415	20	-	248 W%→0.90-2.00, Cb%→0.06-0.10, W%→0.02, A17-314 Max



MESTAINC
ISO 9001:2015

Website : www.mestainc.com

MECHANICAL, ENGINEERING, FORGED, CASTING & PRODUCT.

MANUFACTURE :- Pipe Fittings, L. R. Bends, Flanges, Hammer Union, Supports Etc.

FABRICATION UNIT :- Spool Pieces, Header, Skid, Heat Exchanger, Pre Fabrication

DEDICATED SUPPLIER :- Pipes, Tubes, Plate, Sheet, Round Bar, Structure Steel, Fasteners etc.

MATERIAL :- Nickel Alloy, Stainless Steel, SMO 254, Titanium, Super Duplex, PH Grade,

Copper, Cupro Nickel, Aluminium, Alloy Steel, Carbon Steel, Mild Steel, etc.

Head Off.:

Ground Floor, Shop No.2, Rangawala Bldg., 58 Islampura Street,
Near Alankar Cinema, Mumbai - 400 004.

Mob.: +91 9820007728 / +91 9867899897

Tel.: +91 22 2386 0222-23 / +91 22 6636 2117-18

Email : sales@mestainc.com / nms@mestainc.com

An Unit of : **Swastik Lloyds Engineering Pvt Ltd**