

Now shop online at [www.oceanrobotix.com/store](http://www.oceanrobotix.com/store)



# OCEAN ROBOTIX

We care for the oceans..

## Our Mission

*To provide the Marine and Oceanographic industry with high-quality products and services through the sale and rental of standard products and engineered solutions serving the Commercial, Academic and Government sectors.*

## Our Vision

*Ocean Robotix is committed to develop and maintain a leadership position in the Research, Development, Manufacture, and distribution of Marine Robotics products.*



# Marine Robotic Components



Grippers



Thrusters



Lights & Indicators



Sonars



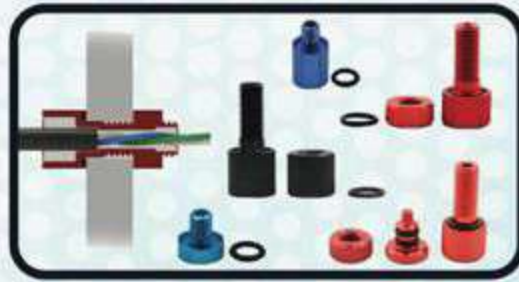
Sensors



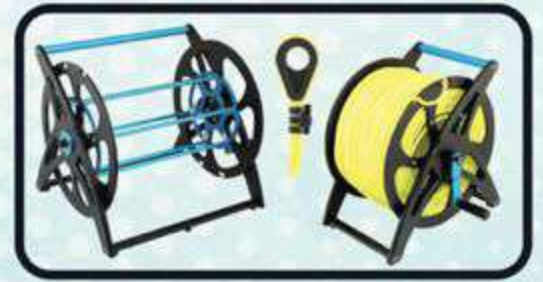
Cameras



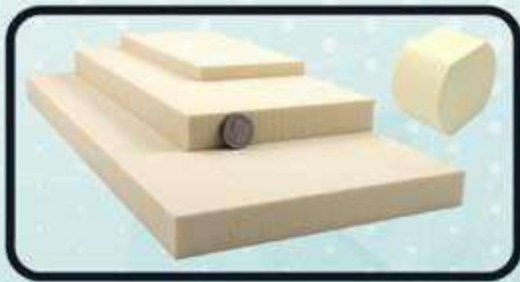
Enclosures



Penetrators



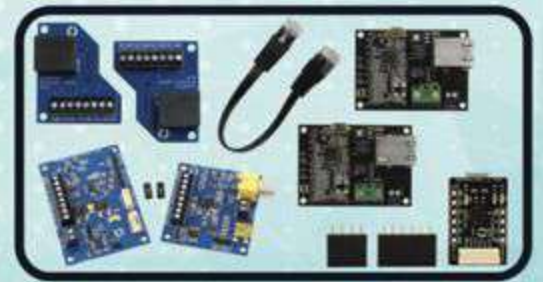
Tether Management



Bouyancy Foam



Motors



Interface Electronics



Potting Tools



Batteries & Chargers



Switches



# Thrusters & Grippers



**Taihua · Haoye**

*Underwater Thrusters, Underwater Motors, Rotating Actuator, Underwater Camera, Underwater Lighting, Underwater PTZs, etc.*



Thruster AUV T550: AUV series thrusters can provide same reliability with using magnetically coupled seal, and moreover the thrust and efficiency under different navigational speeds are emphasized. Each mode of the thrusters can be designed into DC driving mode for motor so as to reduce noise.



**T300 thruster: Magnetically coupling seal mechanism/hermetically sealed/7-blade propeller/compact volume, lightweight**



Rim R100 thruster: Magnetically coupling seal mechanism/ Full ocean depth available / high efficiency, low noise /directly driven by permanent- magnet bearingless & brushless motor



Z61 rotating actuator: Oil-filled compensation sealing structure/Full ocean depth available/high-power density torque 80N.m, specially suitable for use as subsea vehicle steering gear



T1060 thruster: Direct drive by permanent- magnet brushless motor with reduction gear eliminated / high efficiency, low noise

## BLUEPRINTLAB

**Manipulators**  
*Reach 5 mini | Reach 7*

**Actuators**  
*Pan-Tilt | Bend | In-Line Rotate*

**Master Arm**





# Connectors & Cables



## Wet-Mate Connectors

Male Bulkhead

Female Bulkhead

Male Dummy Plug

Female Dummy Plug

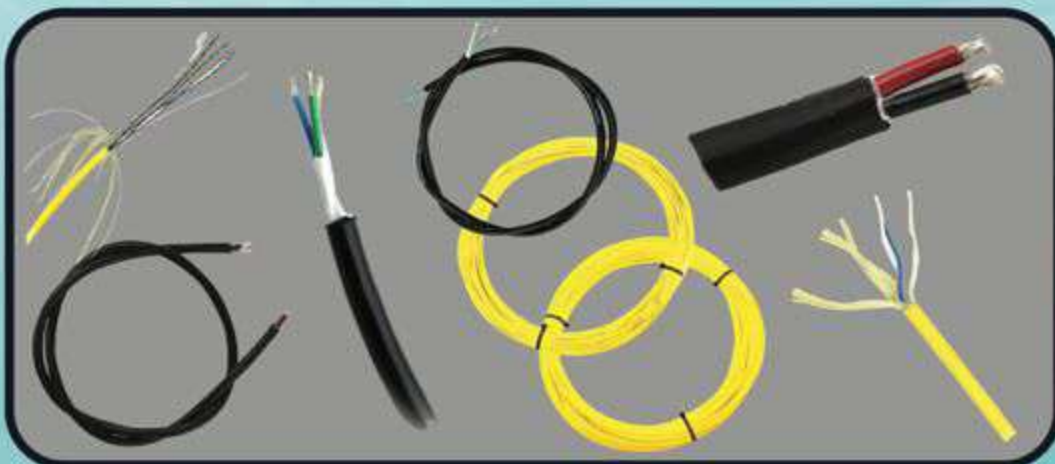
Locking Sleeve

Male Inline Cable Connector

Female Inline Cable Connector

## Applications

- Offshore Oil & Gas Industry
- Renewable Energy & Subsea Systems
- Defence Systems & Equipment
- Oceanographic Systems, Equipment & Instrumentation Solutions
- Remotely Operated Vehicle (ROV) Systems
- Autonomous Underwater Vehicle (AUV) Systems
- Remotely Operated Towed Vehicle (ROTV) Systems
- Underwater Camera, Video & Lighting Systems
- Ocean Bottom Seismic Systems
- Diving Systems & Equipment



*Underwater ROV Cables,  
Underwater Power Cables,  
Underwater Data Cables,  
Underwater Fibre Cables.*



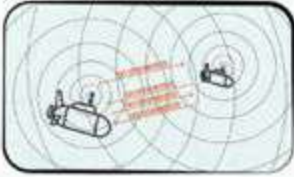
# Underwater Communication Systems

**WATER LINKED**



## M64 - MODEM

*Record Breaking Subsea Communication*

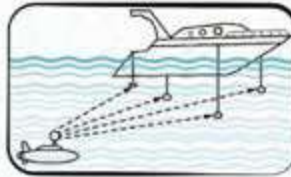


- Two-way communication
- 64 bit per second net data link, both ways
- Typical latency ~500ms
- 200 meter range



## Underwater GPS

*Revolutionizing Subsea Positioning*



- A wide range of Locator choices & Software options makes the Underwater GPS technology a great fit for mini ROVs, divers and all the way up to advanced Oil & Gas Operations.



## Aqua Sense

*Wireless Sensors for Aqua Culture*



- With Water Linked Aqua Sense you can operate a fully featured sensor population in tough environments, without the cables.



IMUs  
INS/GPS  
Gyroscopes  
Accelerometers  
Utility Guidance



USBL  
Data Modems  
Side-Scan Sonars  
Multi-Beam Sonars

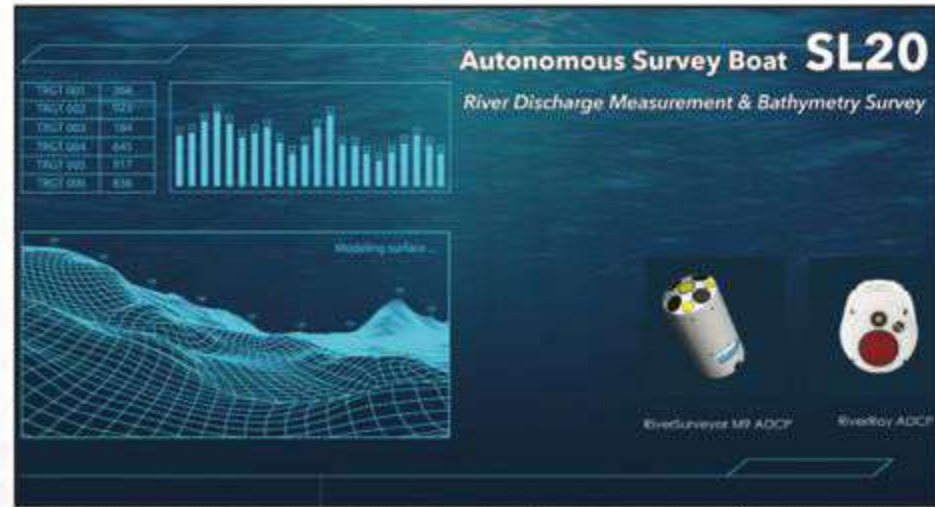


# Our Solutions Platforms



**Dolphin 1**  
Remote Controlled Lifebuoy

Dimensions	115 cm (L) x 83 cm (W) x 21 cm (H)
Weight	13 Kg
Hull Material	PE Plastic
Propulsion	Water-Jet Propulsion
Lifetime	30 mins
Buoyancy	32 Kg
Floatability	150 Kg
Max. Speed	15 Km/hr (9.3 Mile/hr)
Communication Range	> 500 m
Visibility Lights	Yes



**Autonomous Survey Boat SL20**  
River Discharge Measurement & Bathymetry Survey

Dimensions	105 cm (L) x 55 cm (W) x 35 cm (H)
Weight (excl. ADCP)	14 Kg
Payload	10 Kg
Propulsion	Water-Jet Propulsion
Communication Range	Autopilot: 2 Km Remote Control: 1 Km
Remote Control Frequency	900 MHz/ 2.4GHz
Data Telemetry Frequency	2.4 GHz/ 5.8 GHz
Survey Speed	2-5 Knots (1-2.5 m/s)
Max. Speed	10 Knots (5 m/s)
Battery Life	2 Hours @ 2.5 m/s



## Robo Coastal Observer

RCO was developed for remote data collection in water bodies such as river, lake, pond and coast. The equipment could be equipped with sensors for ocean data collection and a camera for surveillance. The equipment can be controlled by a radio controlled remote and the data collected are stored and can be transmitted using RF/GPRS/4G/Satellite telemetry\*.

- 4-6 hours\*
- 4 knots
- SONAR
- Differential Thrust config
- Live 1080p camera
- Surface 1080p camera
- Range of 2km\*
- Lifesaving application
- Return to Home
- GPS Positioning
- Add-on sensors and payloads



## Remotely Operated Vehicle

Our ROV will be the most capable, flexible, and affordable ROV on the market. The 6-thruster vectored configuration & 8-thruster retro-vectored configuration, coupled with strong static stability, provides a vehicle that is smooth and stable, yet highly manoeuvrable. Our ROV provides the capabilities of a high-end mini-ROV at the price of the most basic commercial ROVs.

- 2-4 hours\*
- 3 knots
- SONAR
- 6/8 Thruster Vectored config
- Live 1080p camera
- 1500 lumens per light
- Dive depth of 100 m\*
- Tether upto 300 m\*
- Depth Hold
- Position Hold
- Add-on sensors and payloads